



## WOODBURY

TOWNHOME

**CALL FOR PRICE**

Sq ft: 1,772

Beds: 4

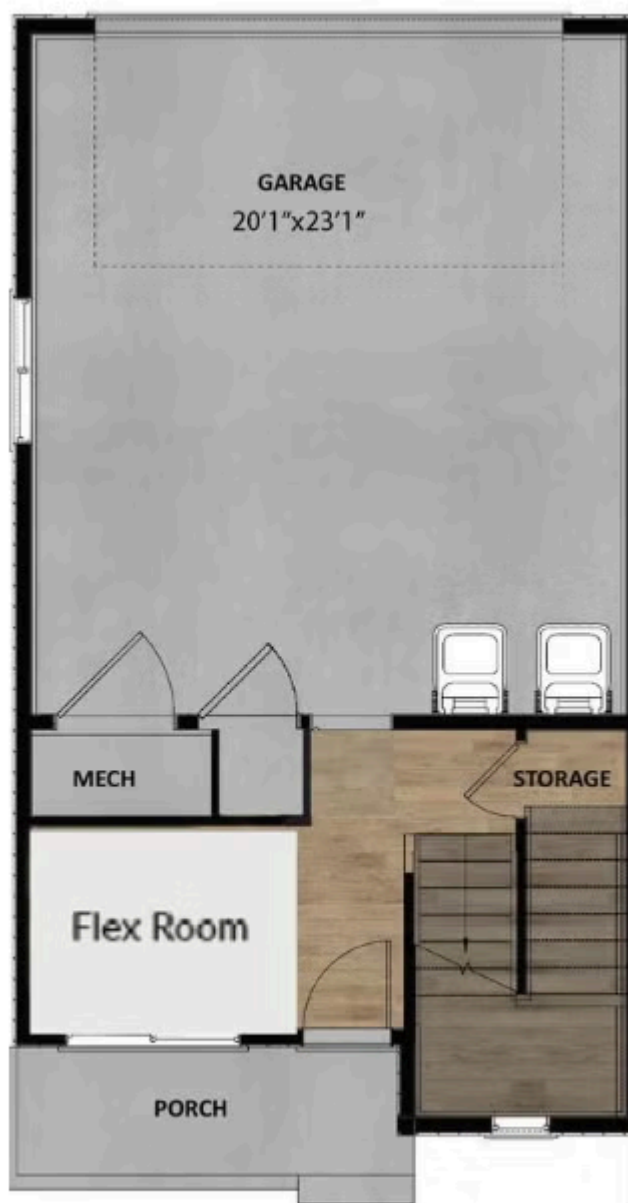
Bath: 2.5

Garage: 2

## ABOUT THIS HOME

The transitional exterior design flows through all architectural details of this stunning 3-story townhome. Enjoy living in our Woodbury townhome floorplan featuring 4 bedrooms, 2.5 bathrooms, 1,772 total square feet and 2-car garage. This unique end unit design includes extra windows for increased natural light and openness. Enter the first floor to a flex room for an office, music room or living room. The kitchen and family room are just up the stairs and are the perfect place to gather with friends and family around the extended bar in the kitchen. A powder room is conveniently located near the main living area. The modern design combined with 9' ceilings is an inviting space with an open concept. The Owner's Suite is located on the second floor and includes a private bathroom with a walk-in closet for your own private retreat. The large laundry room, three additional bedrooms and a full bathroom are located on the third floor. You'll want to call this new Silver Creek Townhome your home.

## FLOOR PLAN



## ENTRY FLOOR

## FLOOR PLAN



**MAIN FLOOR**

## FLOOR PLAN



UPPER FLOOR