



ROSEWOOD SOUTHWEST SPANISH

Sq ft: 1,611

Beds: 3

Bath: 2.5

ABOUT THIS HOME

The Rosewood is one of the amazing rambler plans available in our new Rosalia Ridge community. With 3 bedrooms, 2.5 bathrooms, 1,611 total sq ft, you'll have all the room you need! Off the entryway you have 2 bedrooms and a full bathroom convenient powder room for guests. Continuing into the home, you'll find a bright living room that flows into a gorgeous kitchen with our signature island, a walk-in pantry, and a spacious dining area. Off the living room you have a luxurious Owner's Suite with a spa-like Owner's bathroom, featuring a walk-in shower and large walk-in closet. Outside you have a 2 car garage with an optional 3rd car garage.

Approximate Square Footage Based On Exterior Measurements; Actual Living Area May Vary. Renderings Are Concept Only

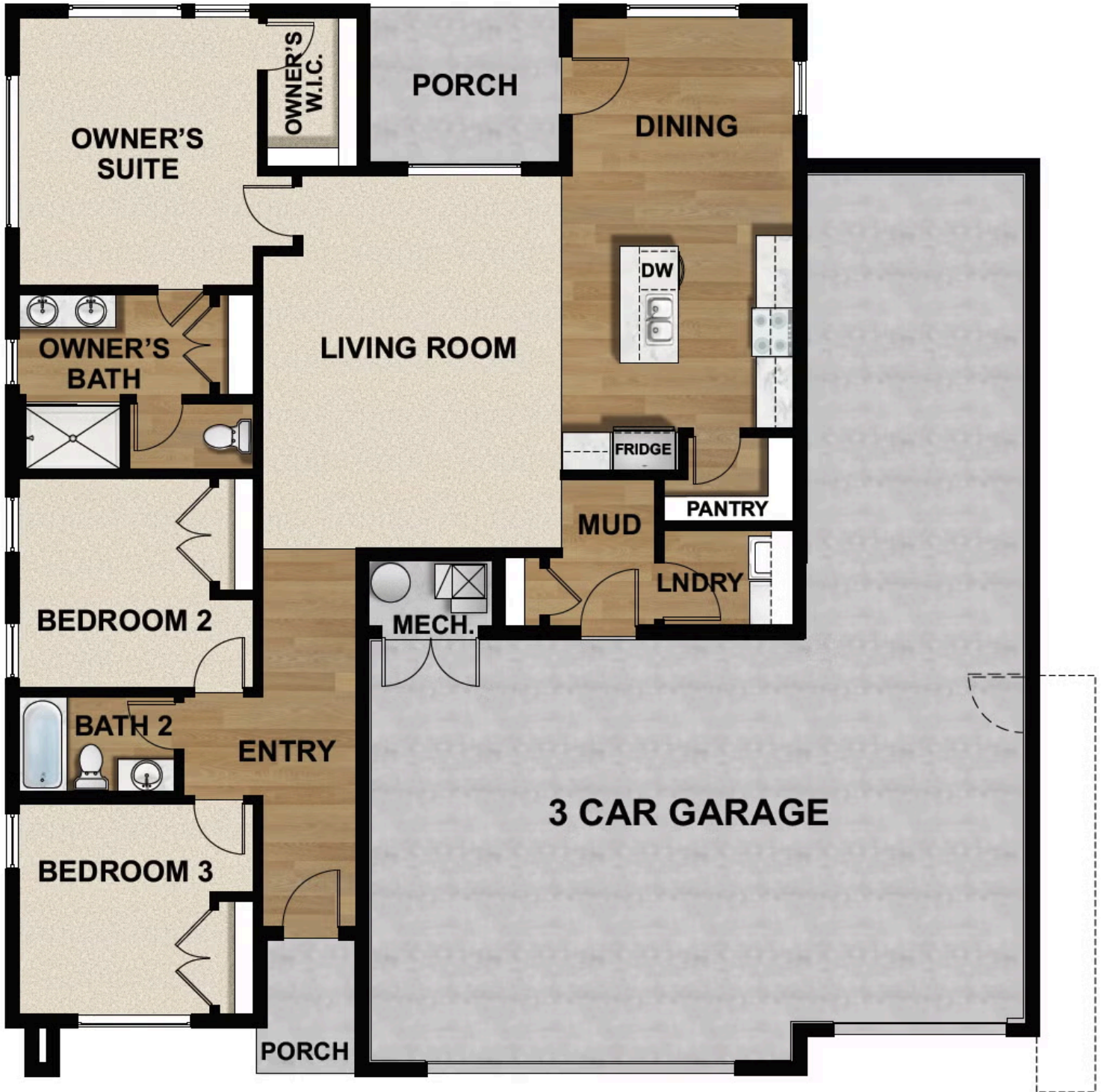
FLOOR PLAN



FLOOR PLAN



FLOOR PLAN





Travis Schloderer
TravisS@fieldstonehomes.com
801-797-2846

FLOOR PLAN



Travis Schloderer
TravisS@fieldstonehomes.com
801-797-2846

FLOOR PLAN



Travis Schloderer
TravisS@fieldstonehomes.com
801-797-2846

FLOOR PLAN



Travis Schloderer
TravisS@fieldstonehomes.com
801-797-2846

FLOOR PLAN