



**663 SOUTH MC
#35, ST. GEORG**

CALL FOR PRICE

Sq ft: 1,611

Beds: 3

Bath: 2.0

ABOUT THIS HOME

HIGHLIGHTED INCLUDED FEATURES:

Stunning Southwest Spanish elevation with stone accent upgrade

Expanded 3-car garage with 12' third bay, black garage door, and service door with sidewalk

Slab-on-grade design for easy, single-level living

Elegant 8' front entry door and 8' interior doors throughout

Open-concept kitchen with quartz countertops and oversized 6' x 5' island with sink

KitchenAid stainless steel gas appliance package

Upgraded cabinetry with soft-close dovetail construction, crown molding, and designer hardware

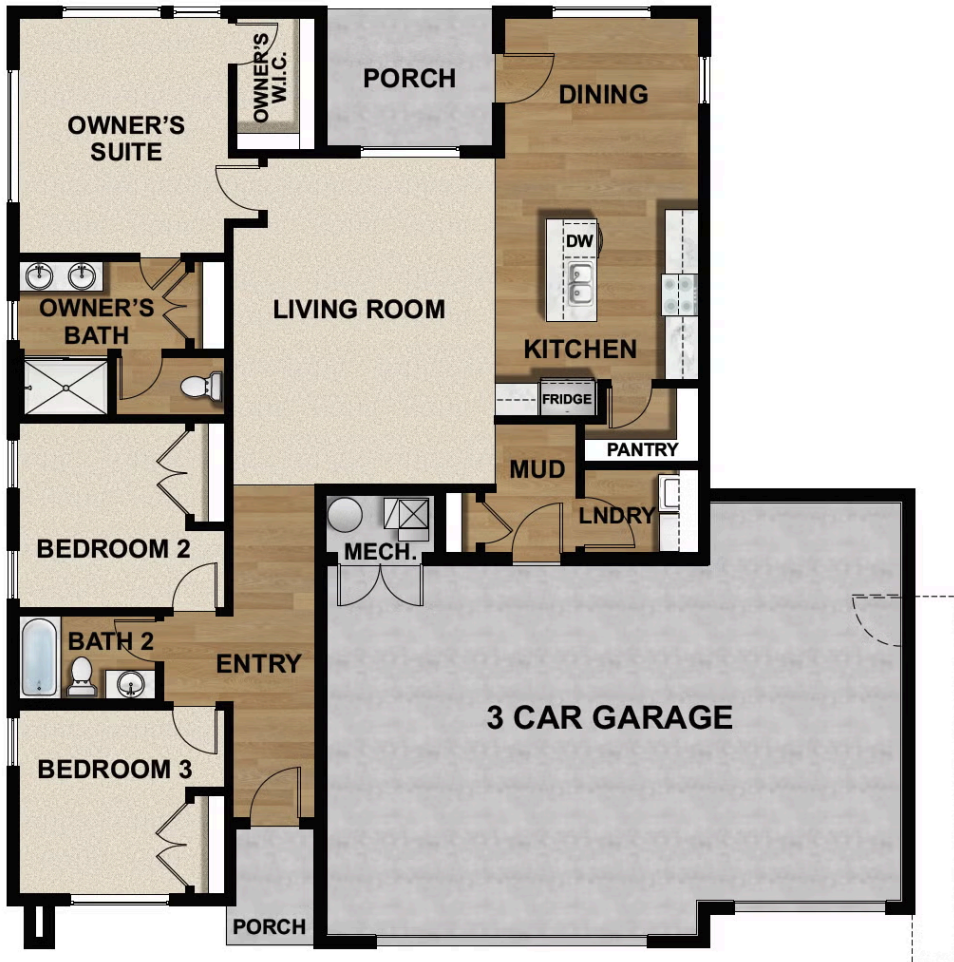
Owner's suite with 78" double-sink vanity and 60" x 42" walk-in tile shower with upgraded glass and dual shower head

Tile flooring in bathrooms and laundry

Luxury vinyl and upgraded carpet selections

Pricing, features and availability are subject to change without notice. Fieldstone Homes makes reasonable efforts to provide accurate information, however, no warranties or representations are made as to its accuracy and Fieldstone Homes assumes no liability or responsibility for any errors in pricing or content. All pricing information, including promotions and incentives, must be verified by an authorized representative for the appropriate community and home. Photography, floor plans, elevations, renderings, virtual tours, maps, square footage and dimensions are approximate and for illustration purposes only, and will vary from the homes as built and are subject to change without notice. Homes in each neighborhood may be owned and sold by a separate limited liability company (LLC) or other separate entity.

FLOOR PLAN



Pricing, features and availability are subject to change without notice. Fieldstone Homes makes reasonable efforts to provide accurate information, however, no warranties or representations are made as to its accuracy and Fieldstone Homes assumes no liability or responsibility for any errors in pricing or content. All pricing information, including promotions and incentives, must be verified by an authorized representative for the appropriate community and home. Photography, floor plans, elevations, renderings, virtual tours, maps, square footage and dimensions are approximate and for illustration purposes only, and will vary from the homes as built and are subject to change without notice. Homes in each neighborhood may be owned and sold by a separate limited liability company (LLC) or other corporate entity.