



UINTA CRAFTSMAN

SINGLE FAMILY

Sq ft: 4,741

Beds: 4

Bath: 2.5

ABOUT THIS HOME

In the beautiful Uinta home, our model in the Antelope Meadows community, comfort and luxury know no bounds. With 4 bedrooms, 2.5 bathrooms, 2,881 finished square feet, and 4,741 total square feet of wide-open space to call your own, living here is a dream. After you're greeted by a large front porch, you'll make your way through a charming entryway. It first leads to a convenient flex room to use however you wish. Then, it takes you to a large, two-story family room with an optional fireplace. Its large windows allow natural light to flood in, adding to the warm glow that this home always seems to emanate. Next to the family room, you'll find a gourmet kitchen with an island, a pantry, a convenient laundry area, and a mudroom. Also on the main floor is your spectacular owner's suite with its spa-like bathroom that lets you relax and unwind. Upstairs, family and guests will always feel comfortable with the large loft, 3 bedrooms, bathroom, and optional bonus room. If you want extra space below your home, you have the option to finish the basement with 2 - 3 full bedrooms, 2 storage areas, a theater room, an extra bathroom, and a large recreation area. Transform the recreation room into a personal oasis so you can sit back, relax, and enjoy every moment.

*Approximate Square Footage Based On Exterior Measurements; Actual Living Area May Vary.

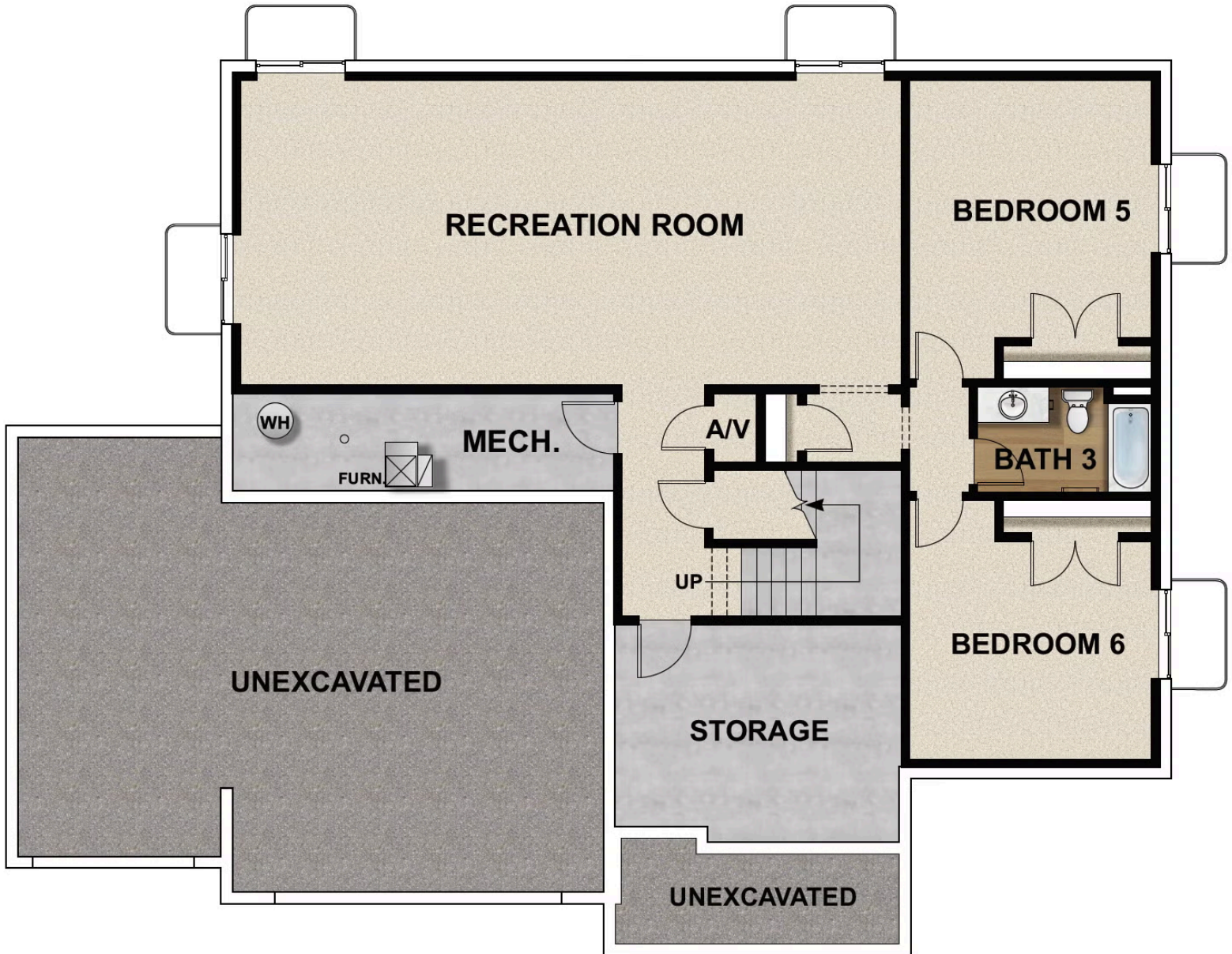
FLOOR PLAN



FLOOR PLAN



FLOOR PLAN





Travis Schloderer
TravisS@fieldstonehomes.com
801-905-8340

FLOOR PLAN