



SKYLINE CRAFTSMAN

SINGLE FAMILY

Sq ft: 4,765

Beds: 3

Bath: 2.5

ABOUT THIS HOME

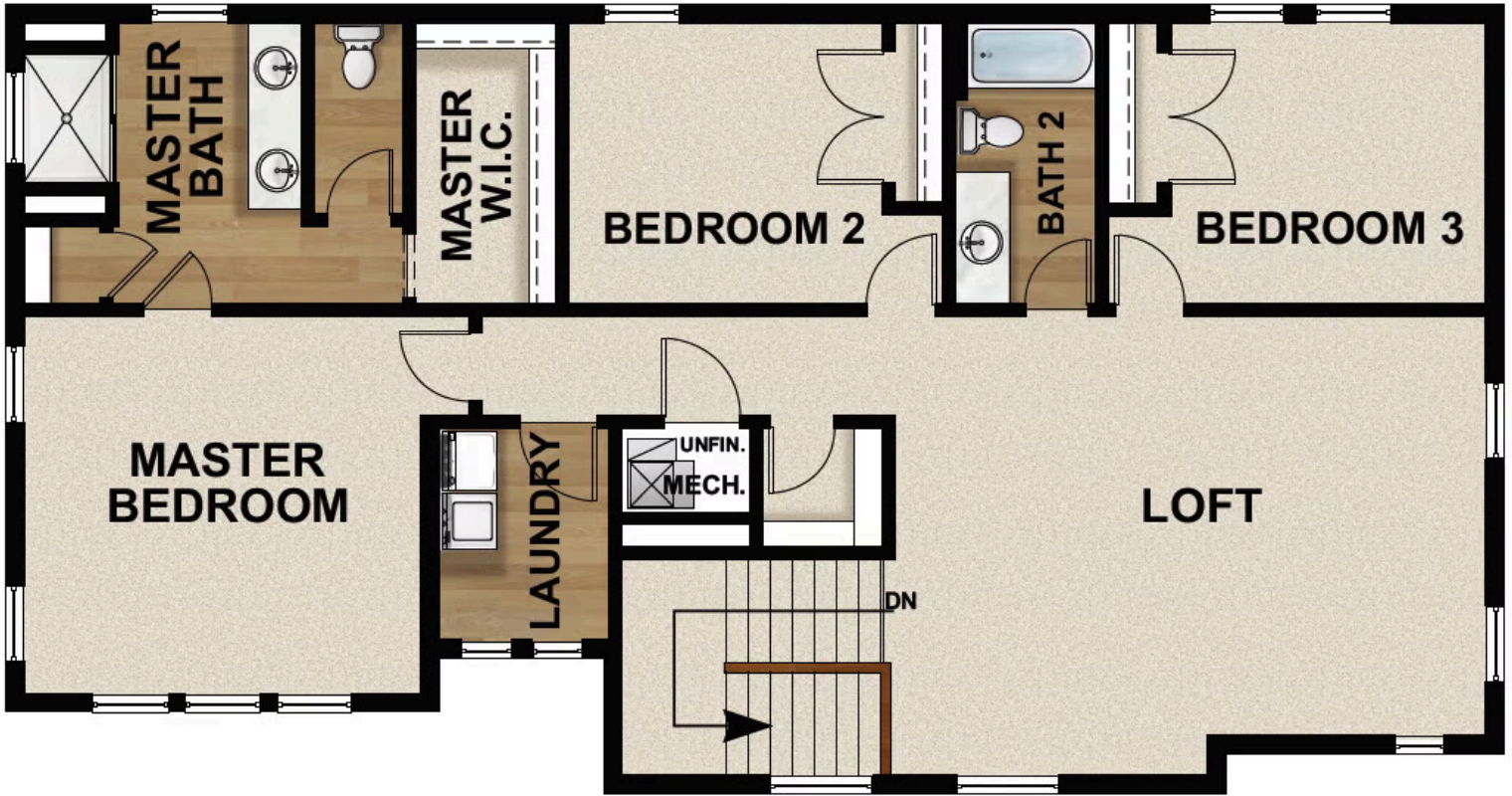
Expertly built and designed with gorgeous features, the Skyline has 3 bedrooms and 2.5 bathrooms. It's the kind of home you can't wait to get back to because you'll enjoy the best of comfort, luxury, and livability. The moment you open the door for the first time, you'll see why this is one of our most popular two-story floor plans. The entryway first leads to a flex room that you can use as an office, playroom, or more. The foyer then takes you to an open living space with a large family room, and a kitchen nook. Tucked away are a pantry, mudroom, and powder room. Are you ready for endless luxury and leisure? Upstairs, your owner's suite perfect for relaxation. Complete with a spa-like bathroom, a large walk-in closet, dual vanities, a walk-in shower, and so much more, you'll love every moment you spend here. The second floor also provides 2 full bedrooms with closets, a bathroom, a convenient laundry area, and a large loft space to personalize however you wish. If you want to add even more space to your home, you have the option to finish the basement with a large recreation area, two bedrooms, and a bathroom. Transform the recreation room into a movie lounge, children's playroom, and more.

Approximate Square Footage Based On Exterior Measurements; Actual Living Area May Vary.

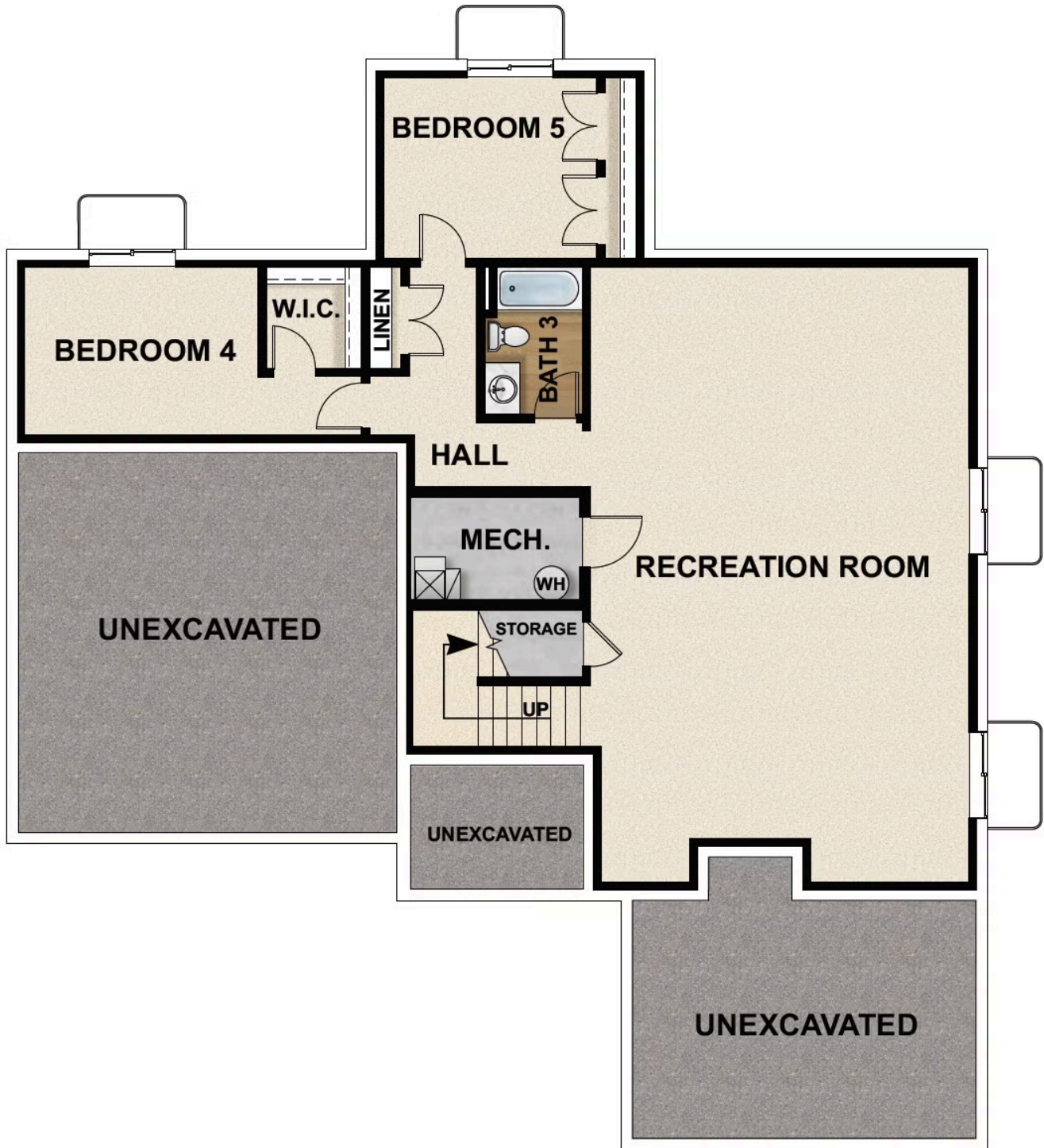
FLOOR PLAN



FLOOR PLAN



FLOOR PLAN





Travis Schloderer
TravisS@fieldstonehomes.com
801-905-8340

FLOOR PLAN