



## **WINSLOW CRAFTSMAN**

**CALL FOR PRICE**

Sq ft: 4,105

Beds: 3

Bath: 2.5

### **ABOUT THIS HOME**

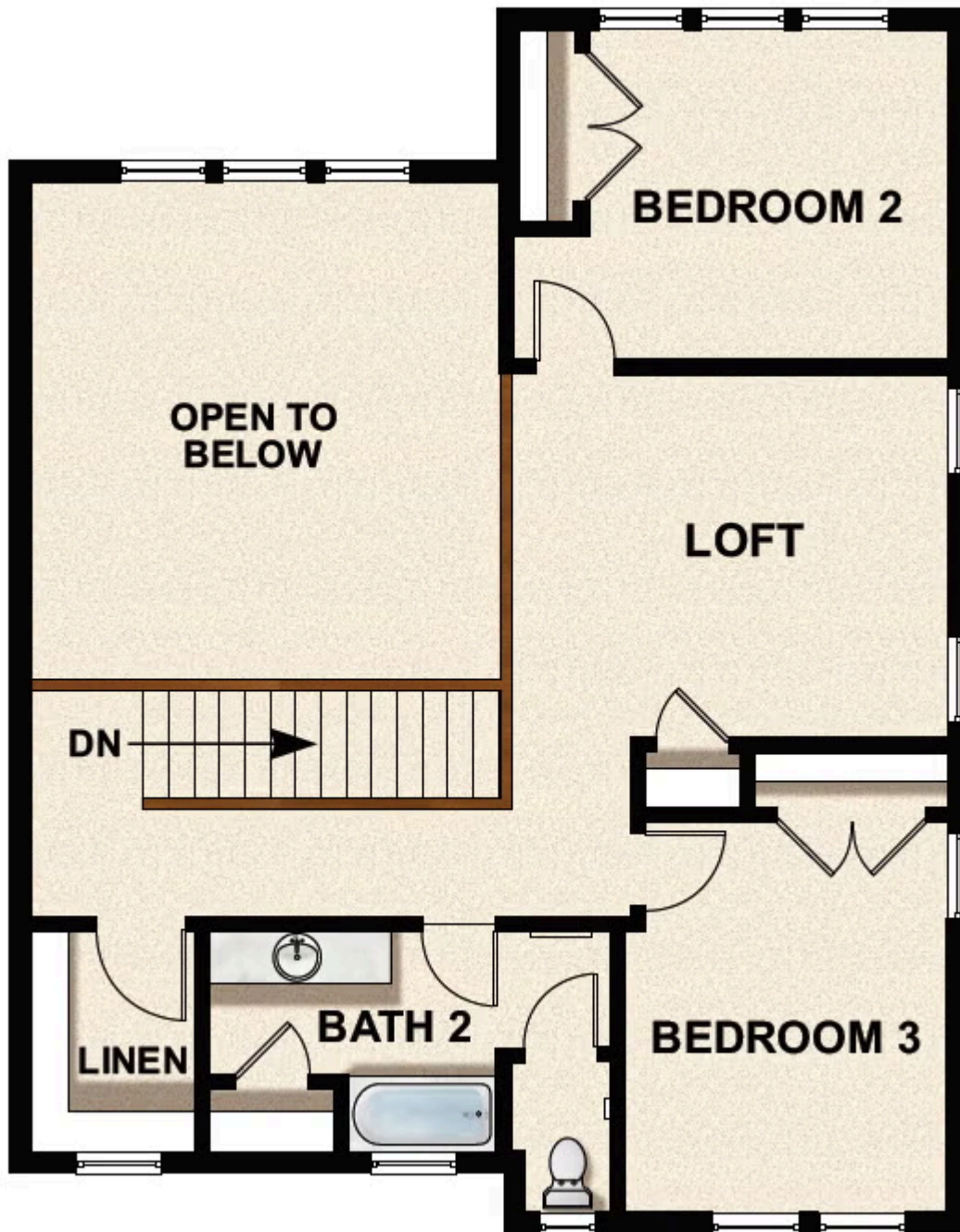
Welcome to The Winslow! You will want to make this floorplan your home with 3 bedrooms, 2.5 bathrooms, and 2,497 finished square feet and 4,105 total square feet. You will have all the room you need for friends & family. Transform the flex room off of the entryway to a home office, media room, or playroom. A powder room is located just past the flex room. Past this space, you will find a charming family room, a large kitchen with a beautiful island, a dining area, and a pantry. Located just off of the family room you will find the spacious & luxurious owner's suite. Included in your suite is a spa-like bathroom with a walk-in shower and large walk-in closet, making it the perfect space to relax and unwind. Outside, you have a massive garage to fit your needs and a landscaped front yard with sprinklers. The second floor also has 2 spacious bedrooms with closets, a bathroom, and a large loft to use however you wish. If you want to add even more space, you have the option to finish the basement with a roomy recreation area, a bedroom with an ensuite bathroom, a flex room, and a storage area.

\*Approximate Square Footage Based On Exterior Measurements; Actual Living Area May Vary.\*

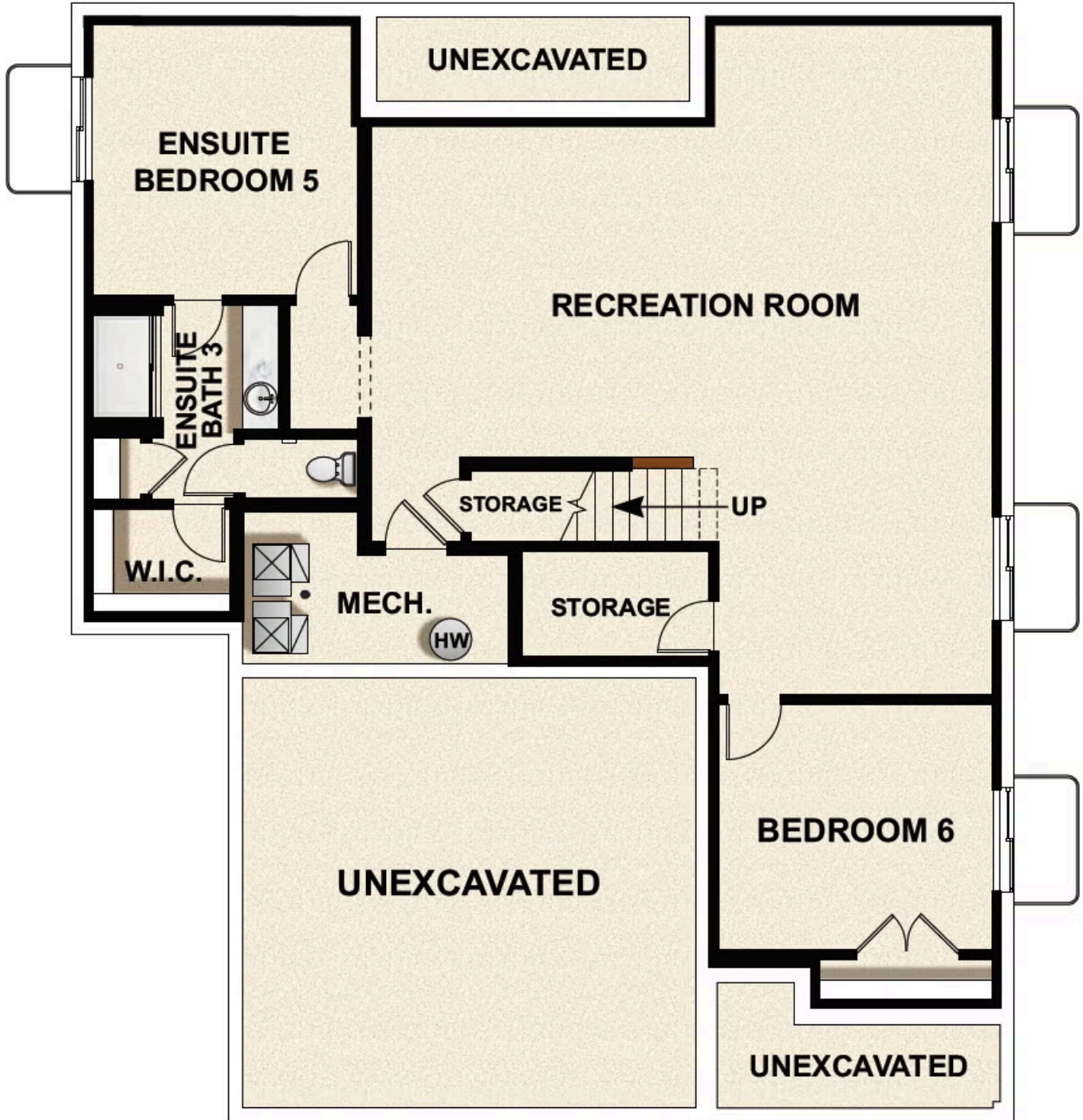
## FLOOR PLAN



**FLOOR PLAN**



**FLOOR PLAN**





Travis Schloderer  
TravisS@fieldstonehomes.com  
385-526-2309

## FLOOR PLAN