



ALPINE CRAFTSMAN

SINGLE FAMILY

Sq ft: 3,231

Beds: 3

Bath: 2.5

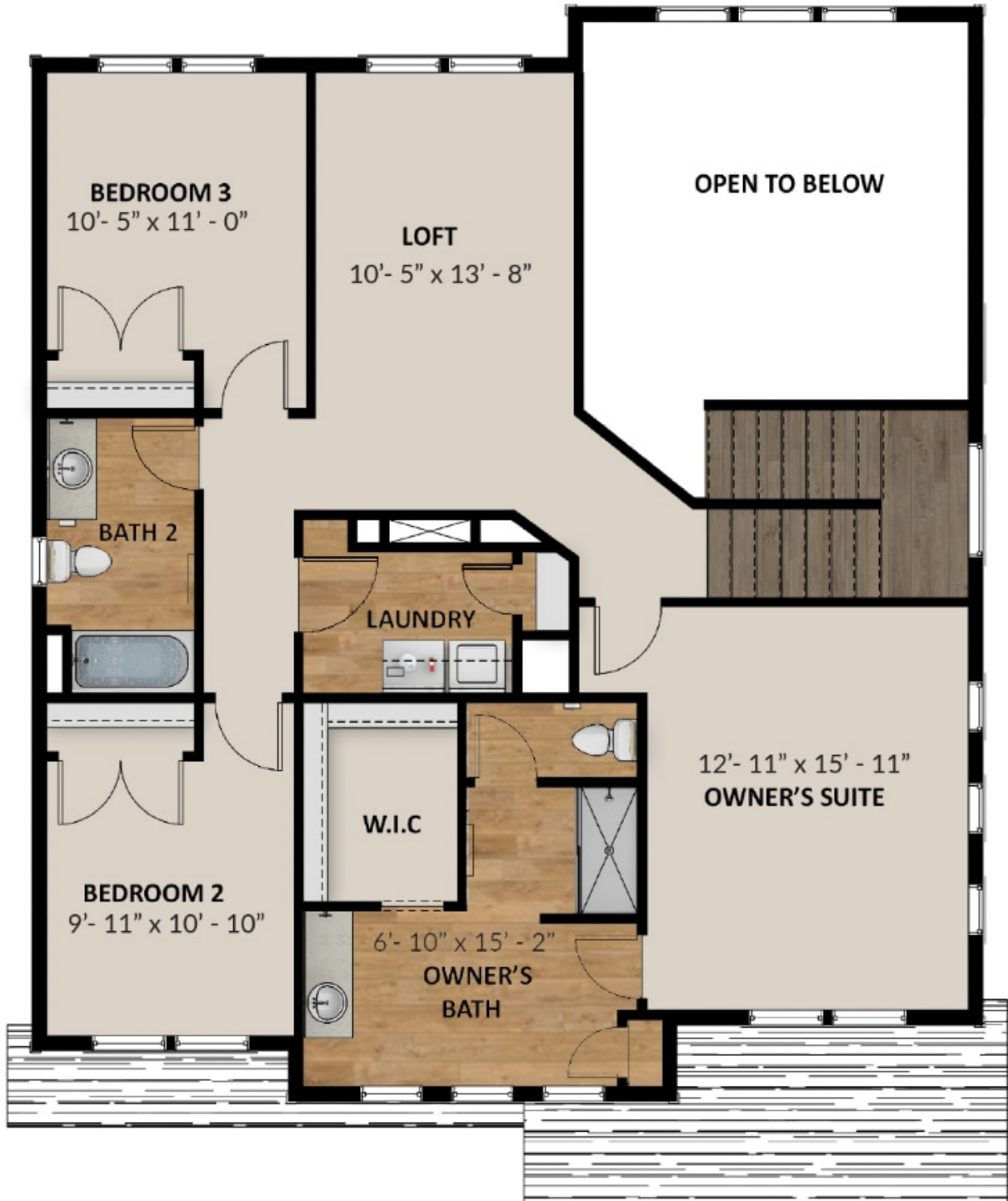
ABOUT THIS HOME

In the Alpine, you wake up every morning with the world at your feet. Modern, luxurious, and homey, this 3 bedroom, 2.5 bathroom floor plan radiates an open, airy light and a lot of heart. With 2,252 finished square feet and 3,231 total square feet of beautiful space, you have all the room you need to live your best life yet. Go ahead and take a look inside—you're finally home! Transform the flex room off of the entryway to a home office, media room, or playroom. A closet and powder room are also located off the foyer. Past this space, you will find a charming family room, a gorgeous kitchen with an optional island, a dining area, a pantry, and a mudroom. Outside, you have a massive garage to fit your needs and a landscaped yard with sprinklers. Upstairs, leisure awaits in your luxurious master suite. Included in your suite is a spa-like bathroom with a walk-in shower and a large walk-in closet, making it the perfect space to relax and unwind. The second floor also has 2 spacious bedrooms with closets, a bathroom, a well-placed laundry area, and a large, flexible loft to use however you wish. If you want to add even more space to add below your home, you have the option to finish the basement with a roomy recreation area, a comfortable bathroom, and 2 extra bedrooms with walk-in closets.

FLOOR PLAN



FLOOR PLAN



FLOOR PLAN



UNFINISHED BASEMENT