



## **ABBEY CRAFTSMAN**

SINGLE FAMILY

Sq ft: 3,051

Beds: 3

Bath: 2.0

## **ABOUT THIS HOME**

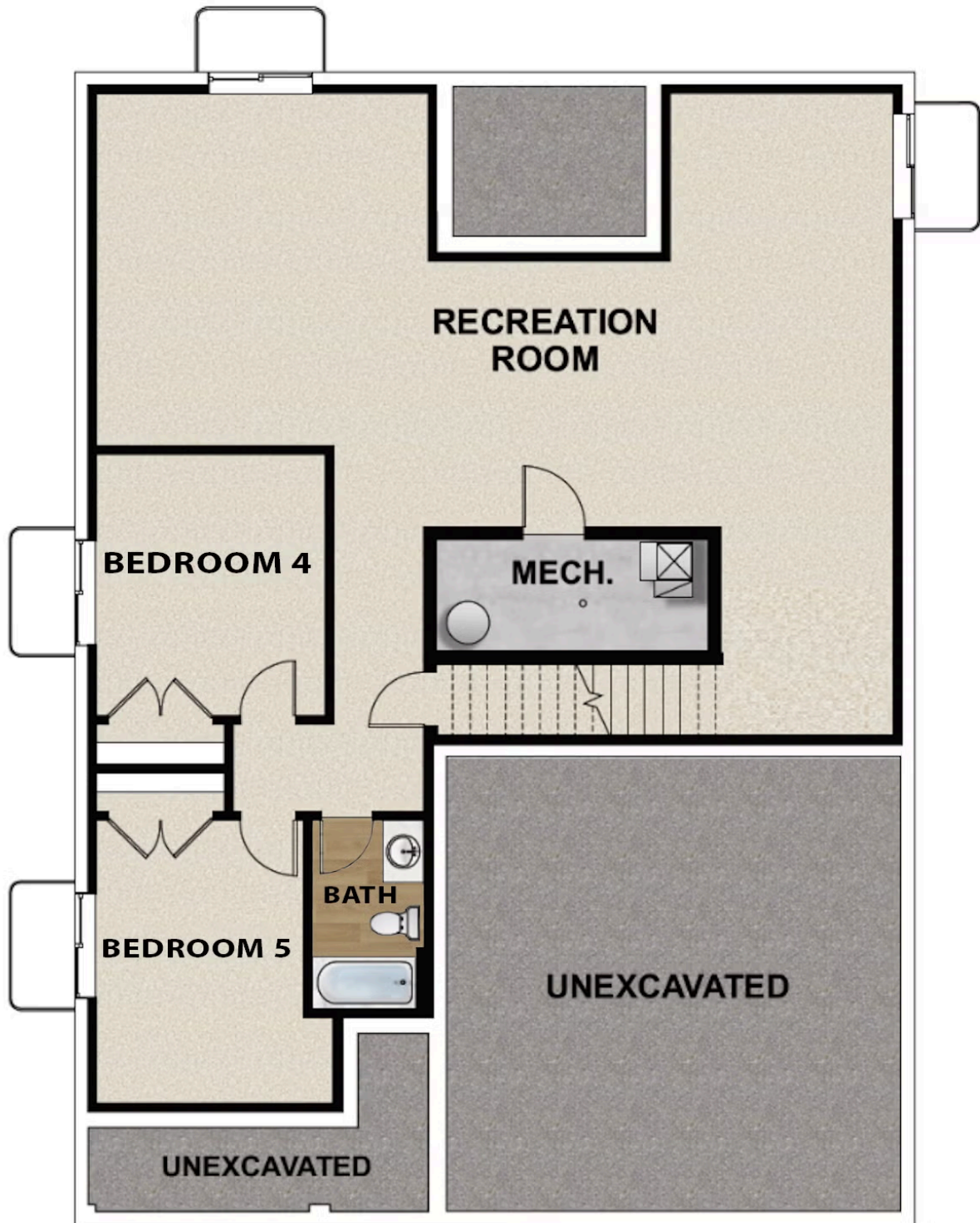
You will love living in the Abbey rambler plan with up to 5 bedrooms and 3 bathrooms with two family rooms and an optional ADU. Step into the open concept main floor that feels bright and spacious with plenty of windows throughout. Your dining room, kitchen, and living room flow together and create the perfect space for entertaining or spending time with family and friends. The covered patio offers a unique outdoor living space to kickback or barbecue. Next to the living room you will find a beautiful owner's suite with more large windows, a walk-in closet, and a private bathroom with storage. Down the hall you will find a bathroom and two additional bedrooms. Downstairs you have the option for more space with a finished basement. This gives you a large recreation room, two more bedrooms and an additional bathroom. The Rental Suite/ADU addon has an enclosed walkout basement and an apartment space to rent or just live in.

\*Approximate Square Footage Based On Exterior Measurements; Actual Living Area May Vary.\*

## FLOOR PLAN



## FLOOR PLAN



**FLOOR PLAN**

