



## 5332 S CENTUR RIVERDALE, UT

SINGLE FAMILY  
**CALL FOR PRICE**

Sq ft: 3,051  
Beds: 5  
Bath: 3.0

### ABOUT THIS HOME

Located in a premier golf course community

Farmhouse elevation with full Hardie siding

Finished basement with added bedroom, bathroom, and recreation room

9' foundation wall upgrade for added ceiling height

Interior 36" fireplace with modern mantel and tile surround

Upgraded kitchen with quartz countertops, tile backsplash, and a 7' x 3' island with sink

Soft-close cabinetry with dovetail construction throughout the home

Whirlpool fingerprint-resistant gas appliance package

Owner's suite with a large walk-in shower, upgraded shower glass, and double-sink vanity

Luxury vinyl flooring on the main level and in bathroom

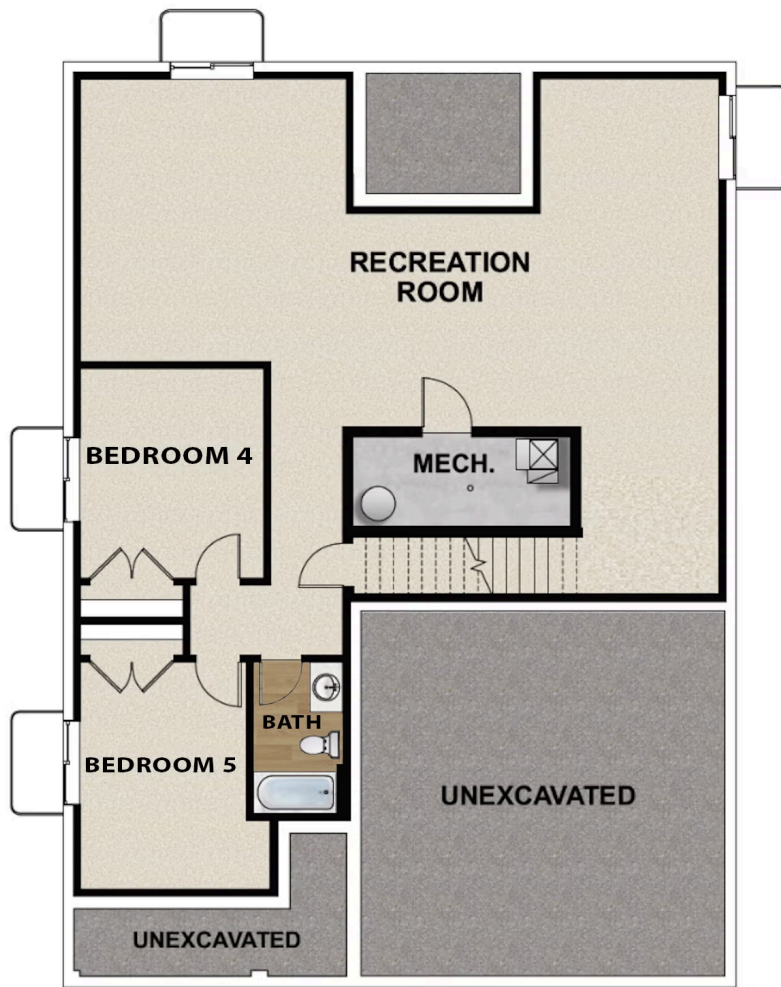
Pricing, features and availability are subject to change without notice. Fieldstone Homes makes reasonable efforts to provide accurate information, however, no warranties or representations are made as to its accuracy and Fieldstone Homes assumes no liability or responsibility for any errors in pricing or content. All pricing information, including promotions and incentives, must be verified by an authorized representative for the appropriate community and home. Photography, floor plans, elevations, renderings, virtual tours, maps, square footage and dimensions are approximate and for illustration purposes only, and will vary from the homes as built and are subject to change without notice. Homes in each neighborhood may be owned and sold by a separate limited liability company (LLC) or other separate entity.

FLOOR PLAN



Pricing, features and availability are subject to change without notice. Fieldstone Homes makes reasonable efforts to provide accurate information, however, no warranties or representations are made as to its accuracy and Fieldstone Homes assumes no liability or responsibility for any errors in pricing or content. All pricing information, including promotions and incentives, must be verified by an authorized representative for the appropriate community and home. Photography, floor plans, elevations, renderings, virtual tours, maps, square footage and dimensions are approximate and for illustration purposes only, and will vary from the homes as built and are subject to change without notice. Homes in each neighborhood may be owned and sold by a separate limited liability company (LLC) or other corporate entity.

## FLOOR PLAN



Pricing, features and availability are subject to change without notice. Fieldstone Homes makes reasonable efforts to provide accurate information, however, no warranties or representations are made as to its accuracy and Fieldstone Homes assumes no liability or responsibility for any errors in pricing or content. All pricing information, including promotions and incentives, must be verified by an authorized representative for the appropriate community and home. Photography, floor plans, elevations, renderings, virtual tours, maps, square footage and dimensions are approximate and for illustration purposes only, and will vary from the homes as built and are subject to change without notice. Homes in each neighborhood may be owned and sold by a separate limited liability company (LLC) or other corporate entity.