



**991 W SUGAR MAPLE
DR #111, MAPLETON,
UT 84664**

SINGLE FAMILY
CALL FOR PRICE

Sq ft: 3,669

Beds: 4

Bath: 2.5

ABOUT THIS HOME

INCENTIVE: Closing Costs

Included Features:

- 3rd Car Garage
- 9' Unfinished Basement
- 36" Interior Fireplace
- 8080 Sliding Glass Door
- Stainless Steel Appliances
- Can Lighting Throughout
- 6'x5' Kitchen Island
- Tile Backsplash In Kitchen
- 42"x42" Walk-In Shower In Owner's Suite Bathroom
- 5' Soaker Tub In Owner's Suit Bathroom

FLOOR PLAN



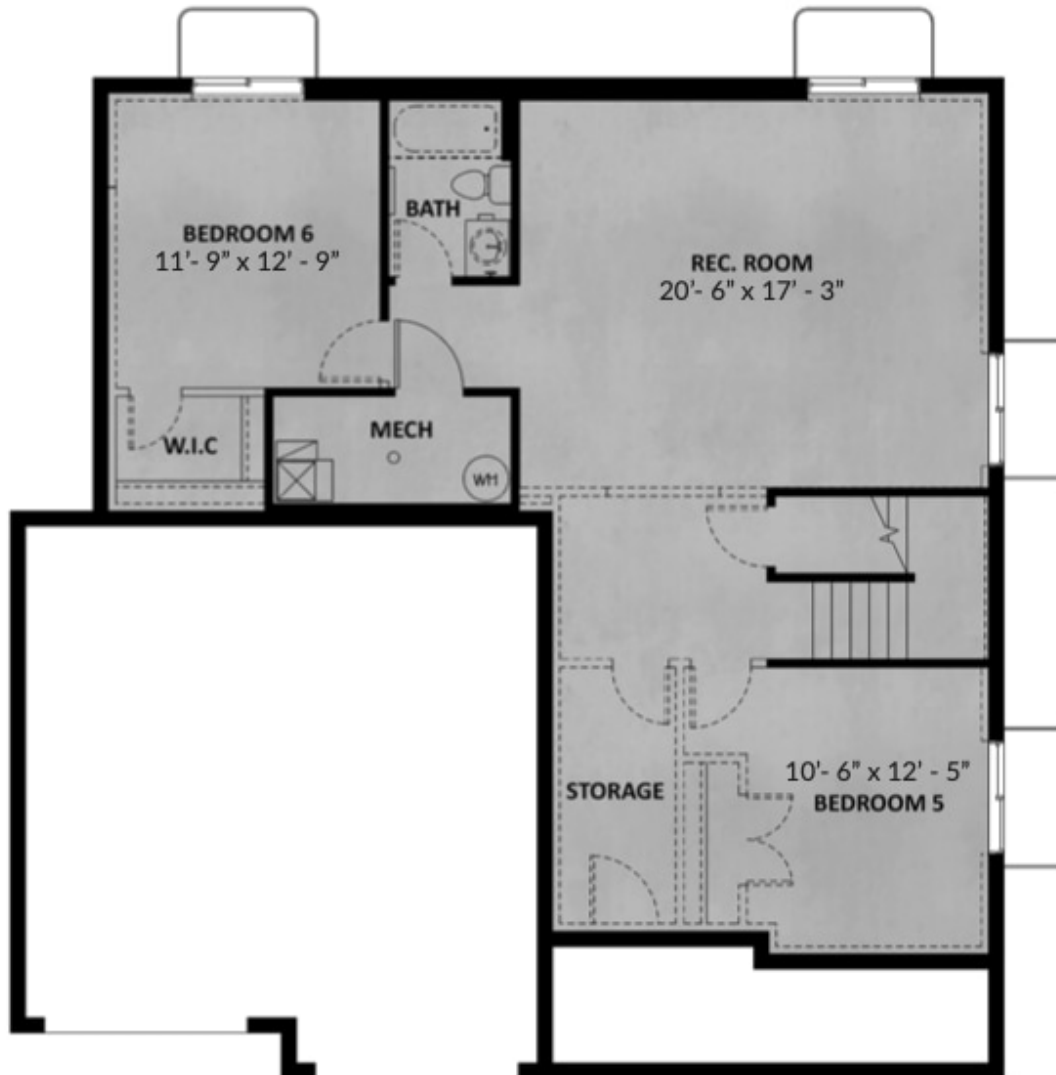
MAIN LEVEL

FLOOR PLAN



UPPER LEVEL

FLOOR PLAN



UNFINISHED BASEMENT