



**1015 W SUGAR  
#110, MAPLETON**

**CALL FOR PRICE**

Sq ft: 3,484

Beds: 5

Bath: 3.5

## ABOUT THIS HOME

INCENTIVE: 5.49% Permanent Rate Buydown (5.744% APR)

### HIGHLIGHTED INCLUDED FEATURES:

Finished Basement

Covered Rear Patio/Deck

Corner Lot Landscaping

42" Interior Fireplace With Tile Surround & Mantel

Upgraded Cabinets Throughout

6'x5' Kitchen Island With Cabinets

Dovetail With Soft Close Hardware Throughout

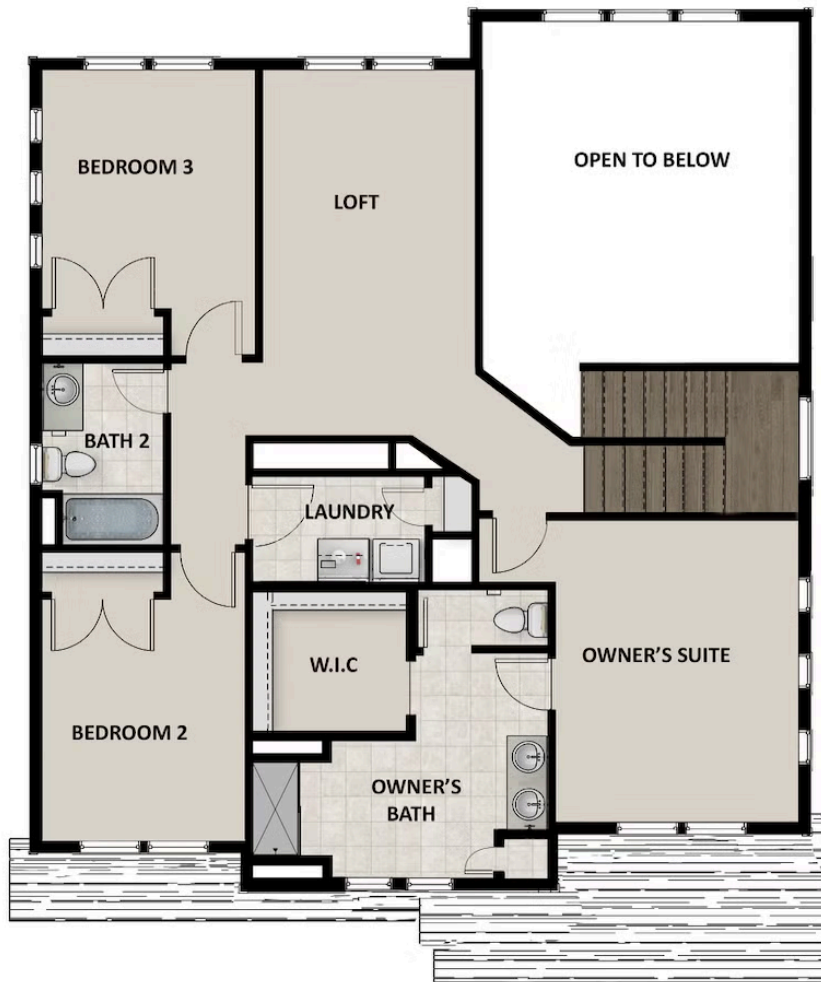
Pricing, features and availability are subject to change without notice. Fieldstone Homes makes reasonable efforts to provide accurate information, however, no warranties or representations are made as to its accuracy and Fieldstone Homes assumes no liability or responsibility for any errors in pricing or content. All pricing information, including promotions and incentives, must be verified by an authorized representative for the appropriate community and home. Photography, floor plans, elevations, renderings, virtual tours, maps, square footage and dimensions are approximate and for illustration purposes only, and will vary from the homes as built and are subject to change without notice. Homes in each neighborhood may be owned and sold by a separate limited liability company (LLC) or other separate entity.

## FLOOR PLAN



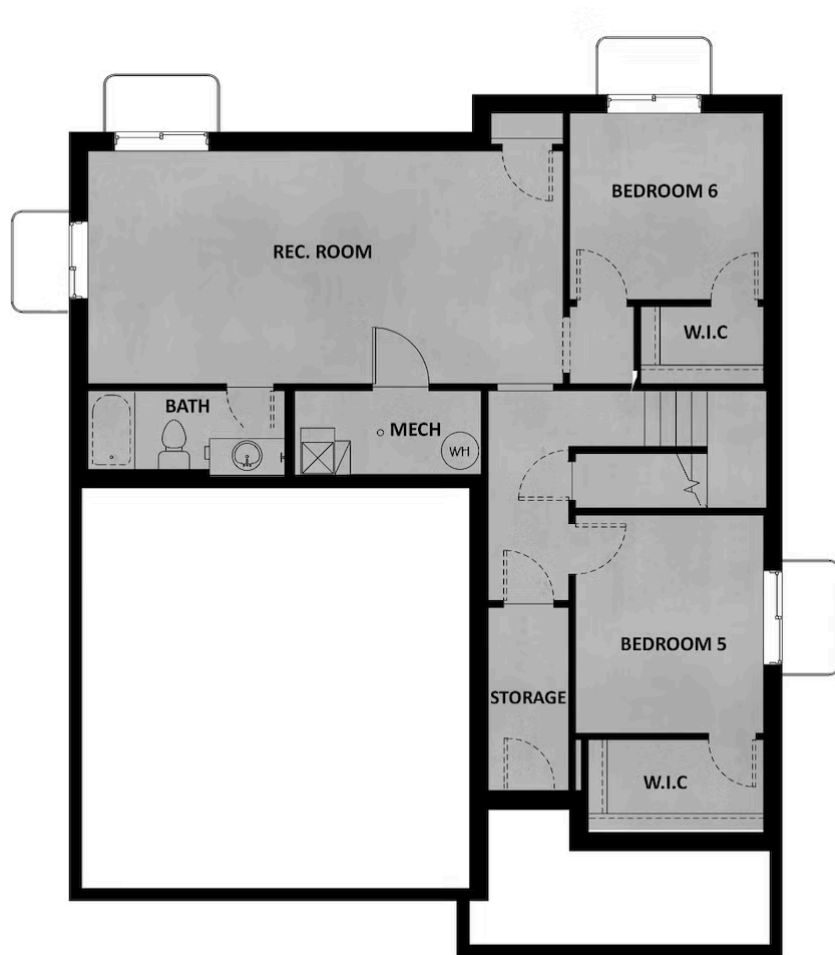
Pricing, features and availability are subject to change without notice. Fieldstone Homes makes reasonable efforts to provide accurate information, however, no warranties or representations are made as to its accuracy and Fieldstone Homes assumes no liability or responsibility for any errors in pricing or content. All pricing information, including promotions and incentives, must be verified by an authorized representative for the appropriate community and home. Photography, floor plans, elevations, renderings, virtual tours, maps, square footage and dimensions are approximate and for illustration purposes only, and will vary from the homes as built and are subject to change without notice. Homes in each neighborhood may be owned and sold by a separate limited liability company (LLC) or other corporate entity.

## FLOOR PLAN



Pricing, features and availability are subject to change without notice. Fieldstone Homes makes reasonable efforts to provide accurate information, however, no warranties or representations are made as to its accuracy and Fieldstone Homes assumes no liability or responsibility for any errors in pricing or content. All pricing information, including promotions and incentives, must be verified by an authorized representative for the appropriate community and home. Photography, floor plans, elevations, renderings, virtual tours, maps, square footage and dimensions are approximate and for illustration purposes only, and will vary from the homes as built and are subject to change without notice. Homes in each neighborhood may be owned and sold by a separate limited liability company (LLC) or other corporate entity.

## FLOOR PLAN



Pricing, features and availability are subject to change without notice. Fieldstone Homes makes reasonable efforts to provide accurate information, however, no warranties or representations are made as to its accuracy and Fieldstone Homes assumes no liability or responsibility for any errors in pricing or content. All pricing information, including promotions and incentives, must be verified by an authorized representative for the appropriate community and home. Photography, floor plans, elevations, renderings, virtual tours, maps, square footage and dimensions are approximate and for illustration purposes only, and will vary from the homes as built and are subject to change without notice. Homes in each neighborhood may be owned and sold by a separate limited liability company (LLC) or other corporate entity.