



SUMMERWOOD MODERN FARMHOUSE

SINGLE FAMILY

Sq ft: 3,826

Beds: 3

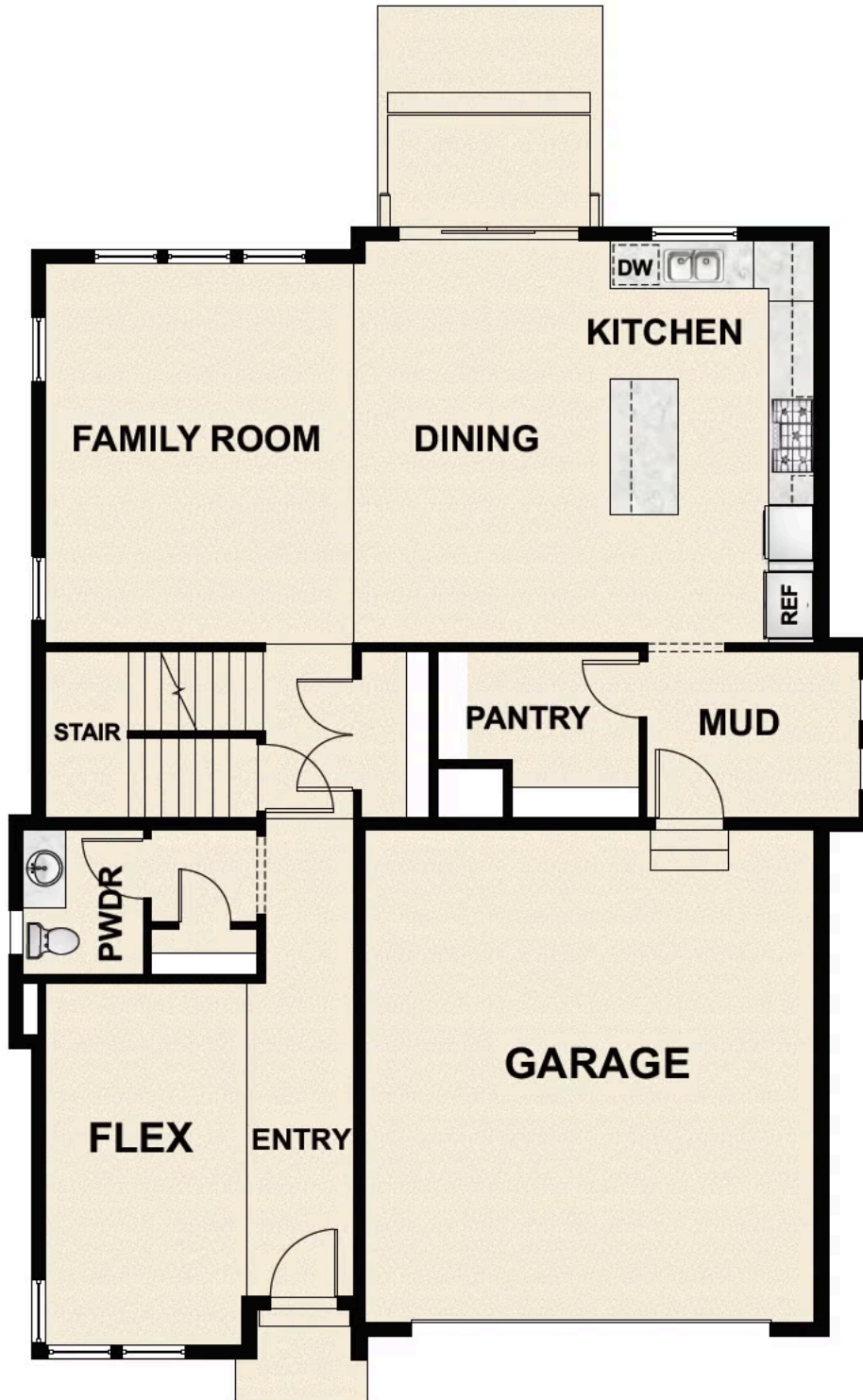
Bath: 2.5

ABOUT THIS HOME

Enjoy the openness of this amazing floor plan with an abundance of natural light. The flex room is close to the entrance and is ideal as an office, gym or a formal gathering space. Enter the two-story great room with unstoppable light that floods from an open floor plan. The two-story great room is ideal to gather with the living spaces tied together for a high-end living experience. The state-of-the-art kitchen includes a massive island with seating for 4 and is equipped with plenty of cooktop and countertop space.

*Square Footage Based On Exterior Measurements; Actual Living Area May Vary.

FLOOR PLAN



FLOOR PLAN



FLOOR PLAN

