



**2878 E HAYLOFT  
LANE #217, HEBER,  
UT 84032**

**SINGLE FAMILY  
CALL FOR PRICE**

Sq ft: 4,204  
Beds: 4  
Bath: 3.5

## **ABOUT THIS HOME**

**INCENTIVE: RATE BUYDOWN AVAILABLE**

**HIGHLIGHTED FEATURES & UPGRADES**

Farmhouse elevation with full Hardie siding

4,204 square feet of finished living space

3-car garage with extended height doors and service entry

Large covered rear patio and composite deck

Fully finished basement with recreation space and bathroom

Gourmet kitchen with stacked cabinetry, quartz countertops, and oversized island

KitchenAid stainless steel appliance package with double ovens and gas cooktop

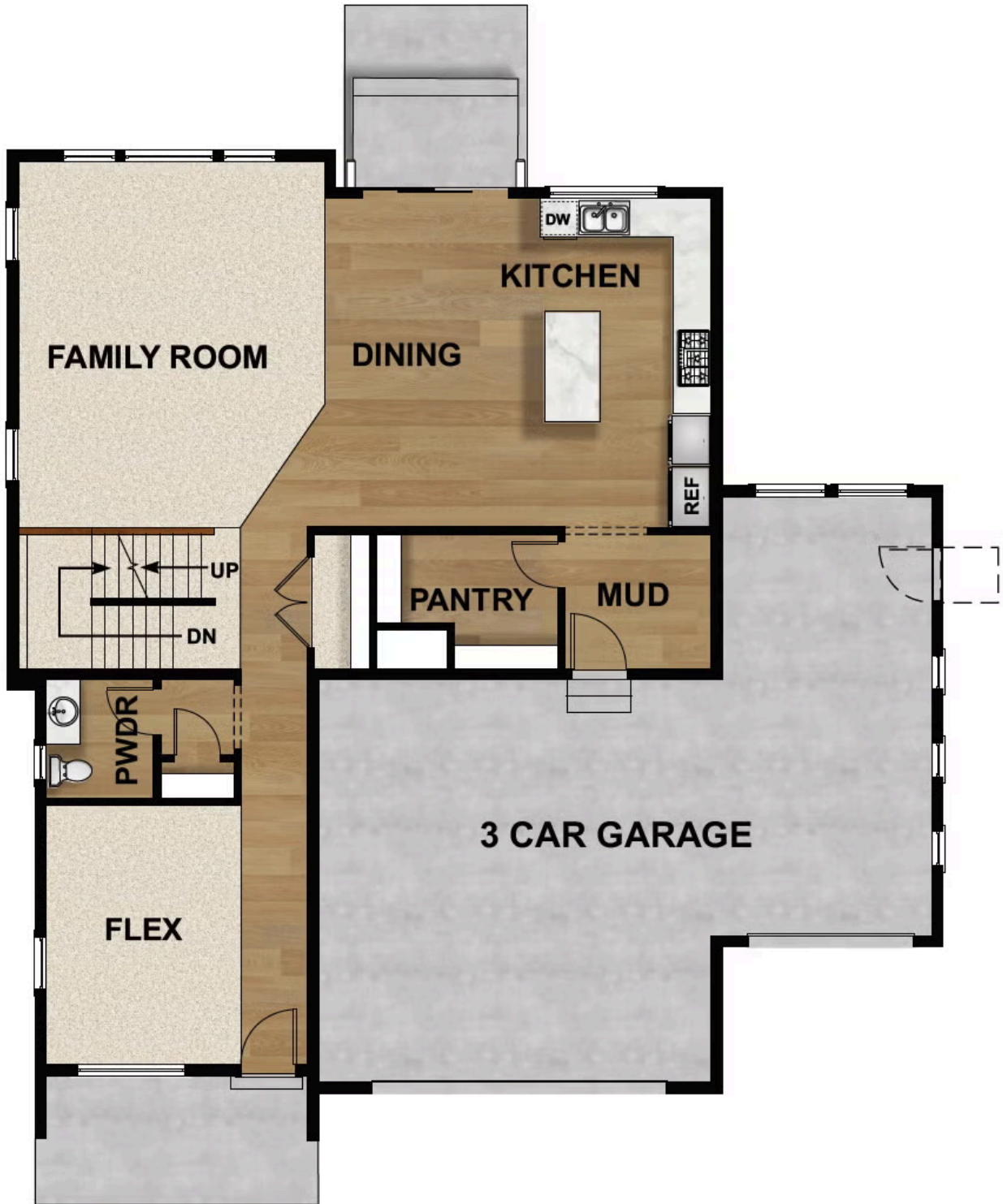
42" interior fireplace with shiplap surround and accent paint

Owner's suite with spa-style walk-in shower, bench seating, and dual shower heads

Upgraded flooring, designer lighting, Smart TV wiring, and high-efficiency HVAC

The Copperview Farmhouse is designed for today's homebuyers, offering 4,204 square feet of finished living space, eye-catching curb appeal, and premium upgrades throughout. Enjoy low-maintenance Hardie siding, a spacious 3-car garage, and a covered rear patio ideal for gatherings. The open-concept interior features a chef-inspired kitchen with stacked cabinetry, quartz countertops, a large island, and top-tier

**FLOOR PLAN**



## FLOOR PLAN



**FLOOR PLAN**

