



TRIDELL

SINGLE FAMILY

Sq ft: 2,325

Beds: 3

Bath: 2.5

ABOUT THIS HOME

The Tridell is one of Fieldstone Homes' classic two-story floor plans with 3 bedrooms, 2.5 bathrooms, 1,610 finished square feet, and 2,325 total square feet. Exterior finishes and details vary from each community.

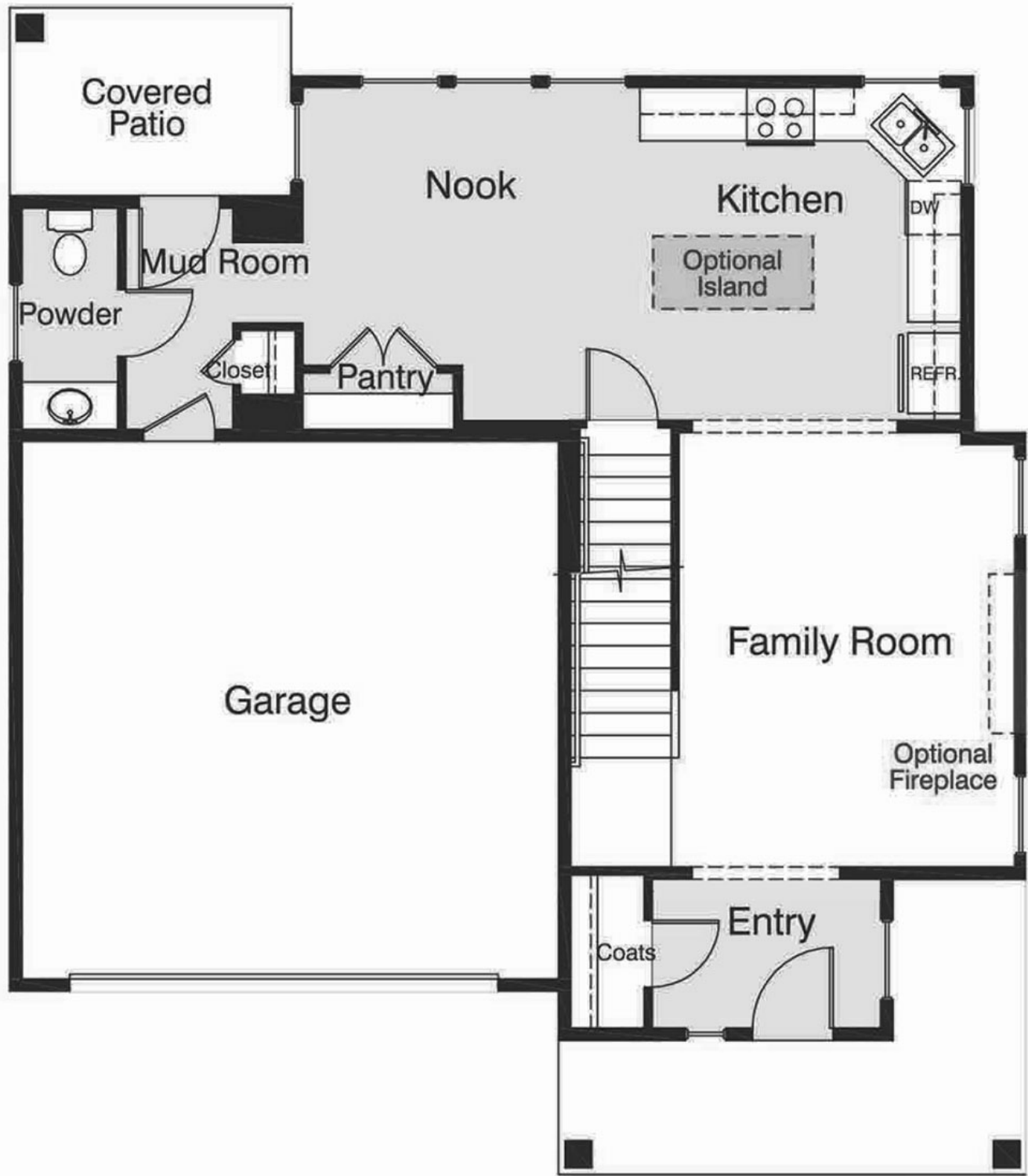
Open, inviting, and beautiful from top to bottom, the Tridell is a home that's easy to love. With 3 bedrooms, 2.5 bathrooms, 1,610 finished square feet, and 2,325 square feet of airy space—you have all the room you need to personalize this home and truly make it your own.

Walk up to the Tridell and you'll find a charming, partial wrap around porch that's perfect for relaxing and entertaining — day or night. Step inside and you'll find a large family room with an optional fireplace, a gorgeous gourmet kitchen with an optional island, a cozy nook for sharing meals, a pantry, a mudroom, a quaint powder room, and—last but not least—a covered patio.

On the second floor, luxury and leisure call your name in your master bedroom and spa-like bathroom. Relax in the mornings and unwind in the evenings; when you're here, you can feel pampered whenever you wish. The second floor also comes complete with 2 extra bedrooms with closets, a spacious bathroom, and a convenient laundry area. Perfect for family or guests, this space is always as comfortable as can be.

If you want even more space, you have the option to beautifully finish a basement that will include a bathroom, mechanical storage space, and large open area to personalize. Whether you've always wanted a comfortable movie lounge, a children's playroom, or a home office, your preferences will come to life down

FLOOR PLAN



FLOOR PLAN



FLOOR PLAN

Optional Finished Basement

