



DAWSON CRAFTSMAN

SINGLE FAMILY

Sq ft: 2,702

Beds: 3

Bath: 2.5

ABOUT THIS HOME

You will love living in the Dawson floor plan! Off the entry, you have a convenient powder bath, and spacious main living space, including a great room with large windows, dining space, and kitchen, as well as a walk-in pantry and mudroom. Upstairs you'll find a loft, gorgeous owner's suite, and two additional bedrooms, each with a walk-in closet. You will also have a laundry room and secondary bathroom. You have even more space in the unfinished basement for a large recreation room and additional bathroom.

*Square Footage Based On Exterior Measurements; Actual Living Area May Vary.

FLOOR PLAN



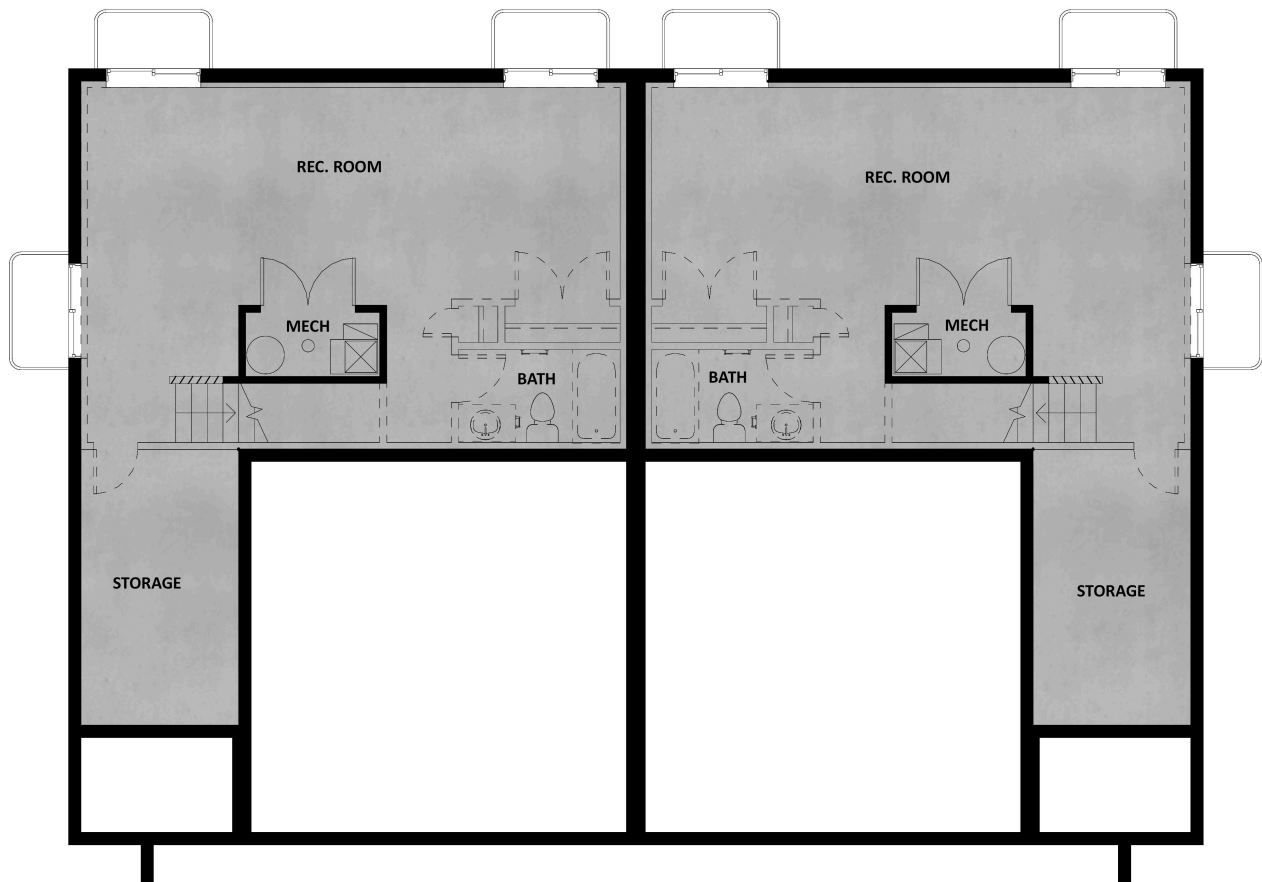
MAIN LEVEL

FLOOR PLAN



UPPER LEVEL

FLOOR PLAN



UNFINISHED BASEMENT LEVEL