



**3710 N EAGLE  
MEADOWS DRIVE,  
EAGLE MOUNTAIN,  
UT 84005**

**SINGLE FAMILY  
CALL FOR PRICE**

Sq ft: 2,747  
Beds: 4  
Bath: 3.5

## ABOUT THIS HOME

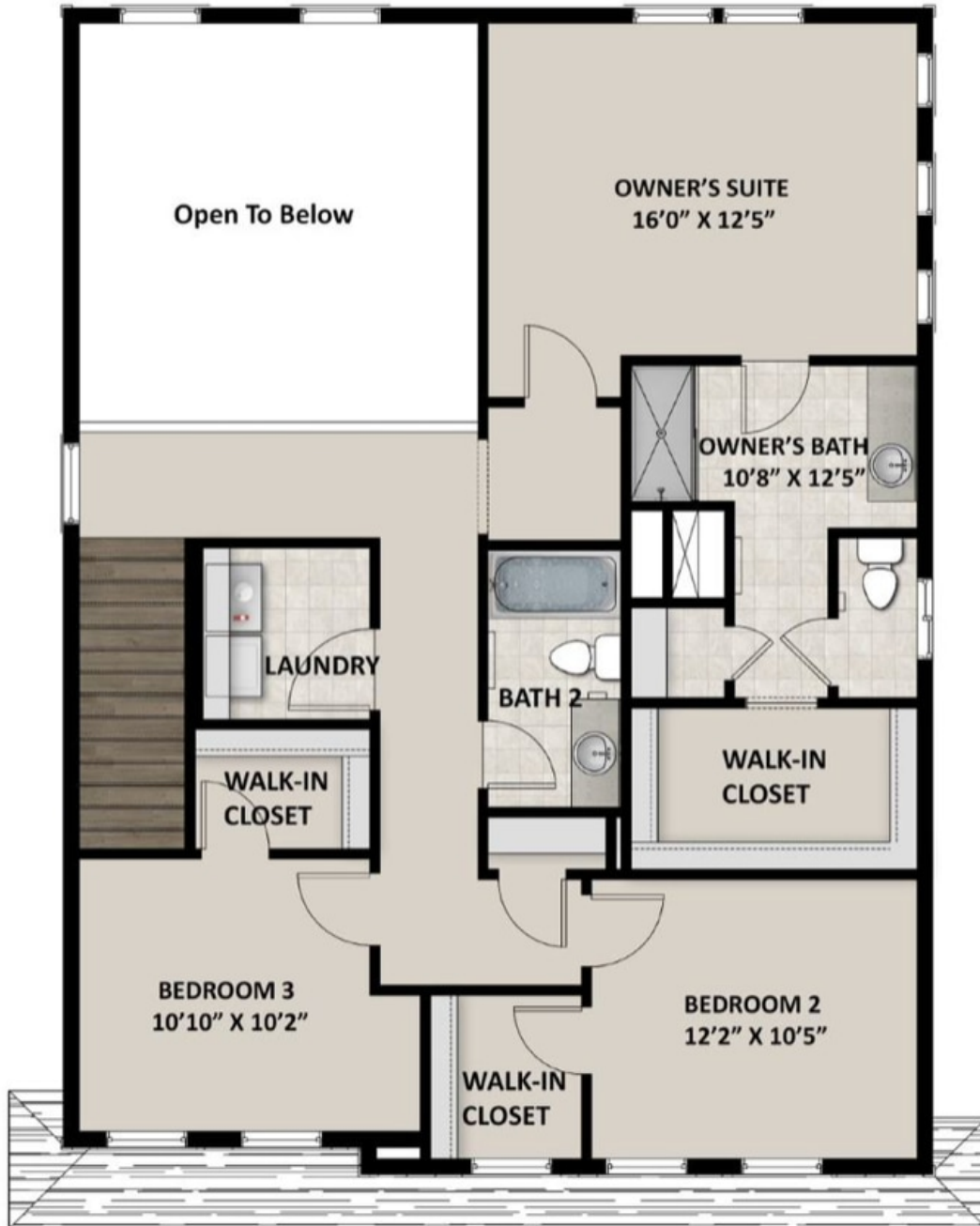
Visit our Sweetwater Model Home Today!

Our Sweetwater floor plan offers up modern features and layout for you and your family to enjoy! Walk inside to discover a main living space with 9' ceilings and an open-to-below great room. In the kitchen, you'll find staggered or 42" upper kitchen cabinets, and a large island for a stylish and functional kitchen. The owner's bath includes a spacious fiberglass walk-in shower for a spa-like bathroom. The Sweetwater model includes 4 bedrooms, 3.5 bathrooms, and 2,747 total square feet.

## FLOOR PLAN



## FLOOR PLAN



## FLOOR PLAN

