



**3710 N EAGLE
DRIVE, EAGLE
UT 84005**

**SINGLE FAMILY
CALL FOR PRICE**

Sq ft: 2,950
Beds: 4
Bath: 3.5

ABOUT THIS HOME

Visit our Sweetwater Model Home Today!

Our Sweetwater floor plan offers up modern features and layout for you and your family to enjoy! Walk inside to discover a main li an open-to-below great room. In the kitchen, you'll find staggered or 42" upper kitchen cabinets, and a large island for a stylish and bath includes a spacious fiberglass walk-in shower for a spa-like bathroom. The Sweetwater model includes 4 bedrooms, 3.5 bathro feet.

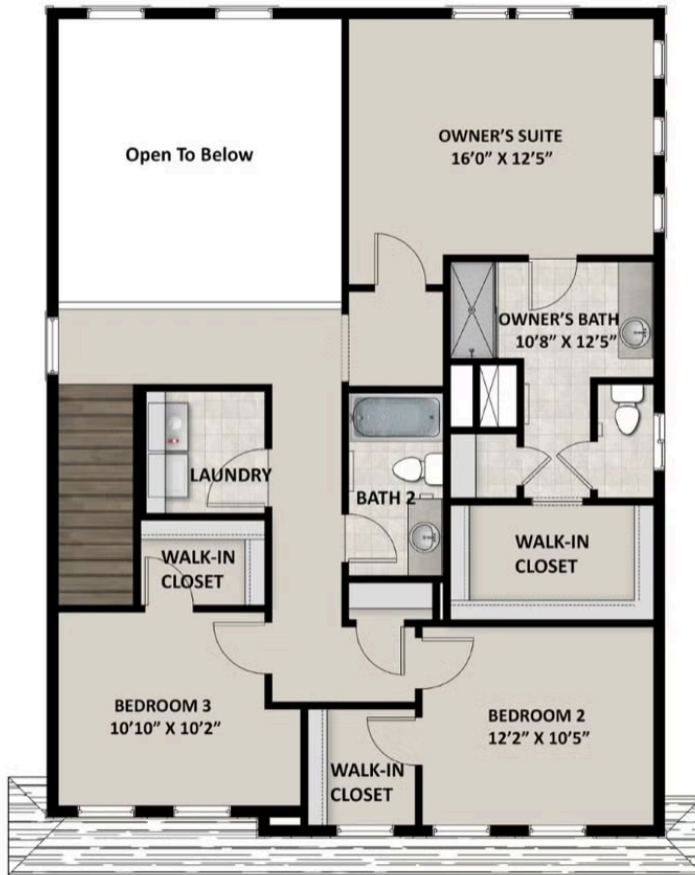
Pricing, features and availability are subject to change without notice. Fieldstone Homes makes reasonable efforts to provide accurate information, however, no warranties or representations are made as to its accuracy and Fieldstone Homes assumes no liability or responsibility for any errors in pricing or content. All pricing information, including promotions and incentives, must be verified by an authorized representative for the appropriate community and home. Photography, floor plans, elevations, renderings, virtual tours, maps, square footage and dimensions are approximate and for illustration purposes only, and will vary from the homes as built and are subject to change without notice. Homes in each neighborhood may be owned and sold by a separate limited liability company (LLC) or other separate entity.

FLOOR PLAN



Pricing, features and availability are subject to change without notice. Fieldstone Homes makes reasonable efforts to provide accurate information, however, no warranties or representations are made as to its accuracy and Fieldstone Homes assumes no liability or responsibility for any errors in pricing or content. All pricing information, including promotions and incentives, must be verified by an authorized representative for the appropriate community and home. Photography, floor plans, elevations, renderings, virtual tours, maps, square footage and dimensions are approximate and for illustration purposes only, and will vary from the homes as built and are subject to change without notice. Homes in each neighborhood may be owned and sold by a separate limited liability company (LLC) or other corporate entity.

FLOOR PLAN



Pricing, features and availability are subject to change without notice. Fieldstone Homes makes reasonable efforts to provide accurate information, however, no warranties or representations are made as to its accuracy and Fieldstone Homes assumes no liability or responsibility for any errors in pricing or content. All pricing information, including promotions and incentives, must be verified by an authorized representative for the appropriate community and home. Photography, floor plans, elevations, renderings, virtual tours, maps, square footage and dimensions are approximate and for illustration purposes only, and will vary from the homes as built and are subject to change without notice. Homes in each neighborhood may be owned and sold by a separate limited liability company (LLC) or other corporate entity.

FLOOR PLAN



Pricing, features and availability are subject to change without notice. Fieldstone Homes makes reasonable efforts to provide accurate information, however, no warranties or representations are made as to its accuracy and Fieldstone Homes assumes no liability or responsibility for any errors in pricing or content. All pricing information, including promotions and incentives, must be verified by an authorized representative for the appropriate community and home. Photography, floor plans, elevations, renderings, virtual tours, maps, square footage and dimensions are approximate and for illustration purposes only, and will vary from the homes as built and are subject to change without notice. Homes in each neighborhood may be owned and sold by a separate limited liability company (LLC) or other corporate entity.