



**3634 N EAGLE
MEADOWS DR #308,
EAGLE MOUNTAIN,
UT 84005**

SINGLE FAMILY
CALL FOR PRICE

Sq ft: 2,434
Beds: 4
Bath: 3.5

ABOUT THIS HOME

HIGHLIGHTED INCLUDED FEATURES:

Craftsman elevation with full Hardie siding

Rear composite deck with upgraded sliding glass door

Expanded family room window package for added natural light

Upgraded kitchen cabinetry with quartz countertops and a 6' x 3' island with sink

Whirlpool fingerprint-resistant gas kitchen appliances

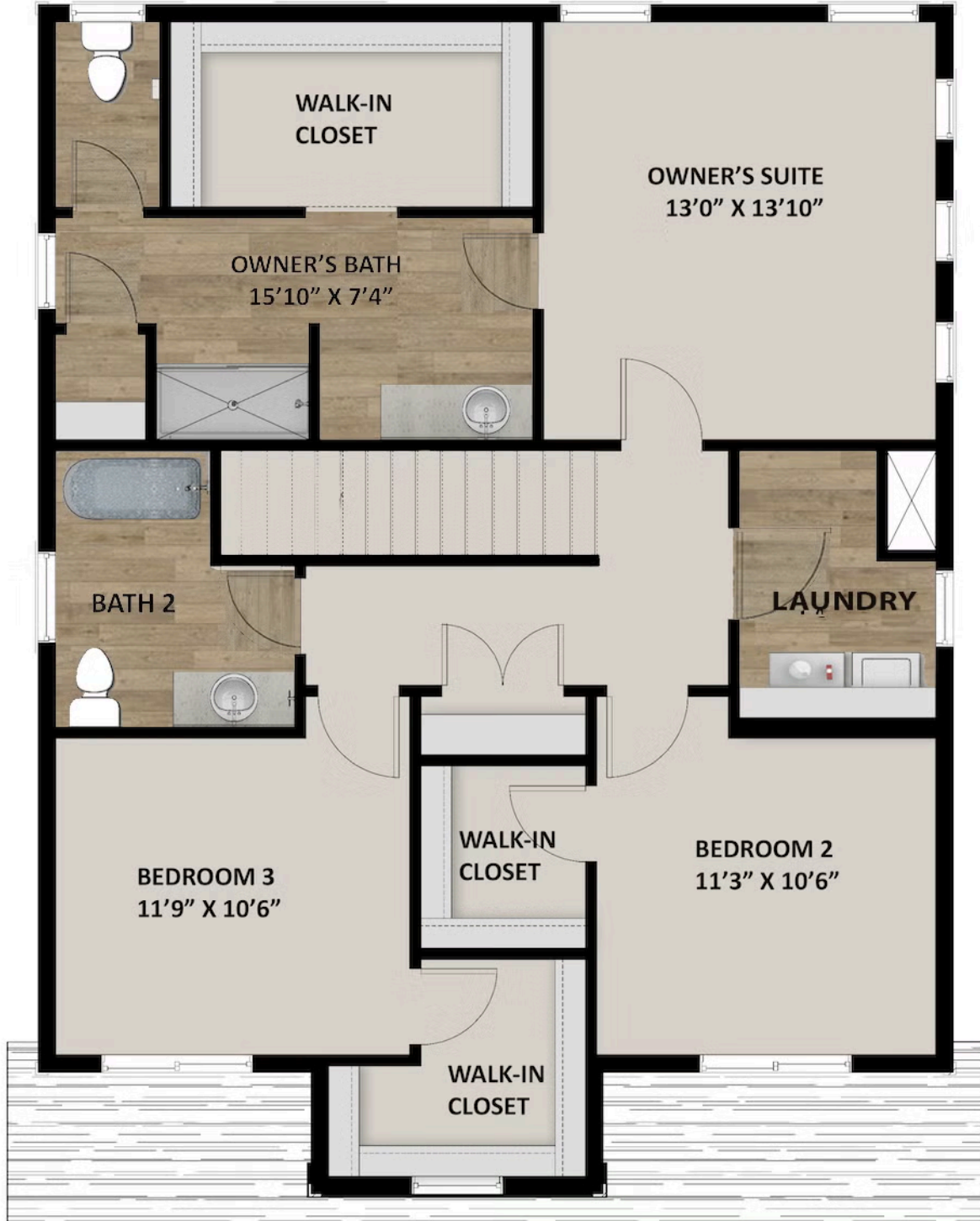
Large 84" double-sink vanity in owner's suite with quartz countertop

Spacious 60" x 42" walk-in shower with cultured marble surround and upgraded shower glass

FLOOR PLAN



FLOOR PLAN



FLOOR PLAN

