



**3633 N EAGLE
MEADOWS DRIVE
#312, EAGLE
MOUNTAIN, UT
84005**

**SINGLE FAMILY
CALL FOR PRICE**

Sq ft: 2,694
Beds: 3
Bath: 2.5

ABOUT THIS HOME

HIGHLIGHTED INCLUDED FEATURES:

Rear Composite Deck

Upgraded Cabinets Throughout

5'x3' Kitchen Island With Cabinets

Whirlpool Fingerprint Resistant Gas Kitchen Appliances

Gorgeous Quartz Countertops Throughout

72" Double Sink Vanity In Owner's Suite Bathroom

Upgraded Luxury Vinyl Flooring

Upgraded Carpet

60"x42" Walk-In Shower With Cultured Marble Surround & Glass Door In Owner's Suite Bathroom

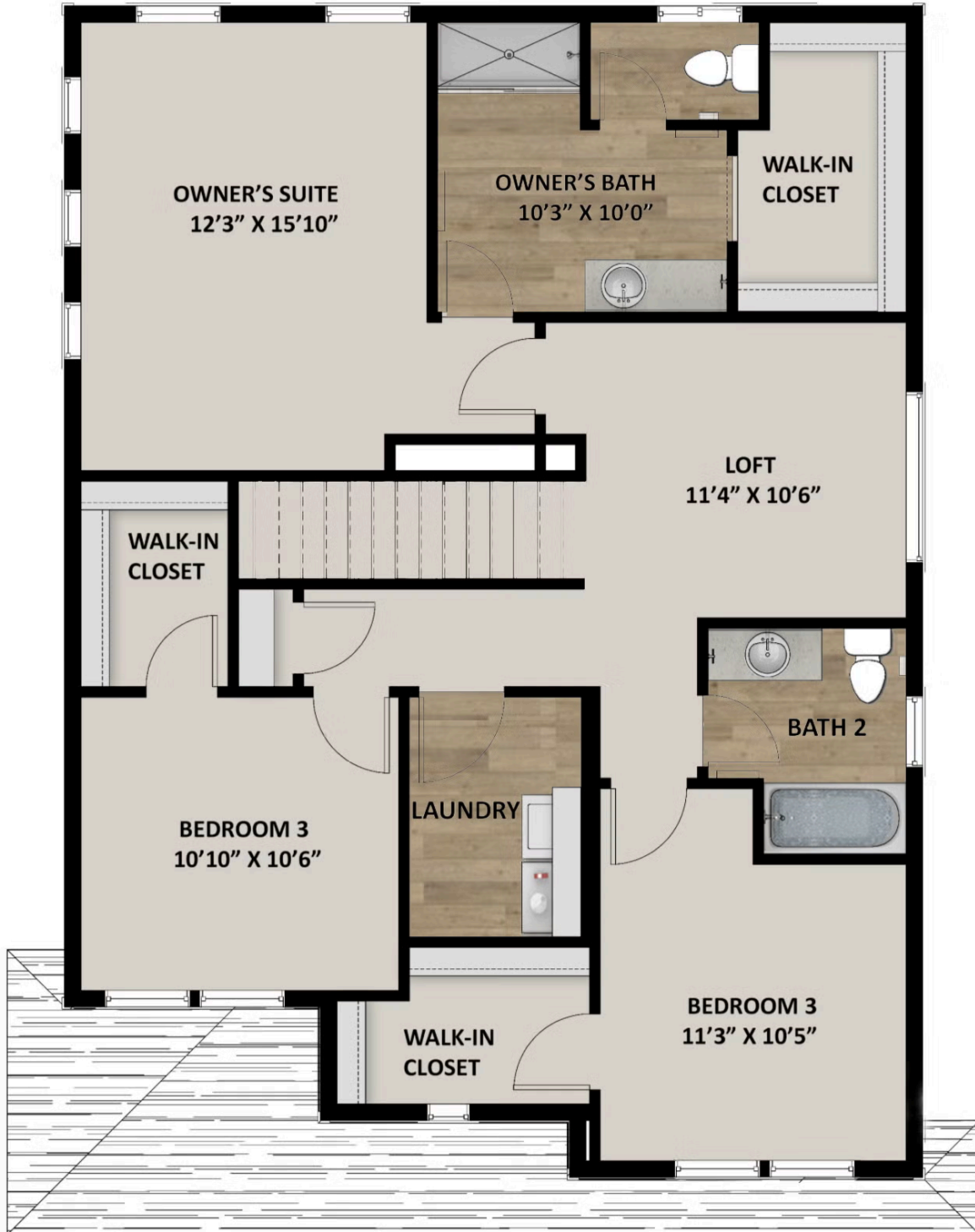
Pendant Lighting Above Kitchen Island

Can Lighting In Kitchen & Living Room

FLOOR PLAN



FLOOR PLAN



FLOOR PLAN

