



SPRUCE TRANSITIONAL - ADU OPTION

SINGLE FAMILY

Sq ft: 3,850

Beds: 3

Bath: 2.5

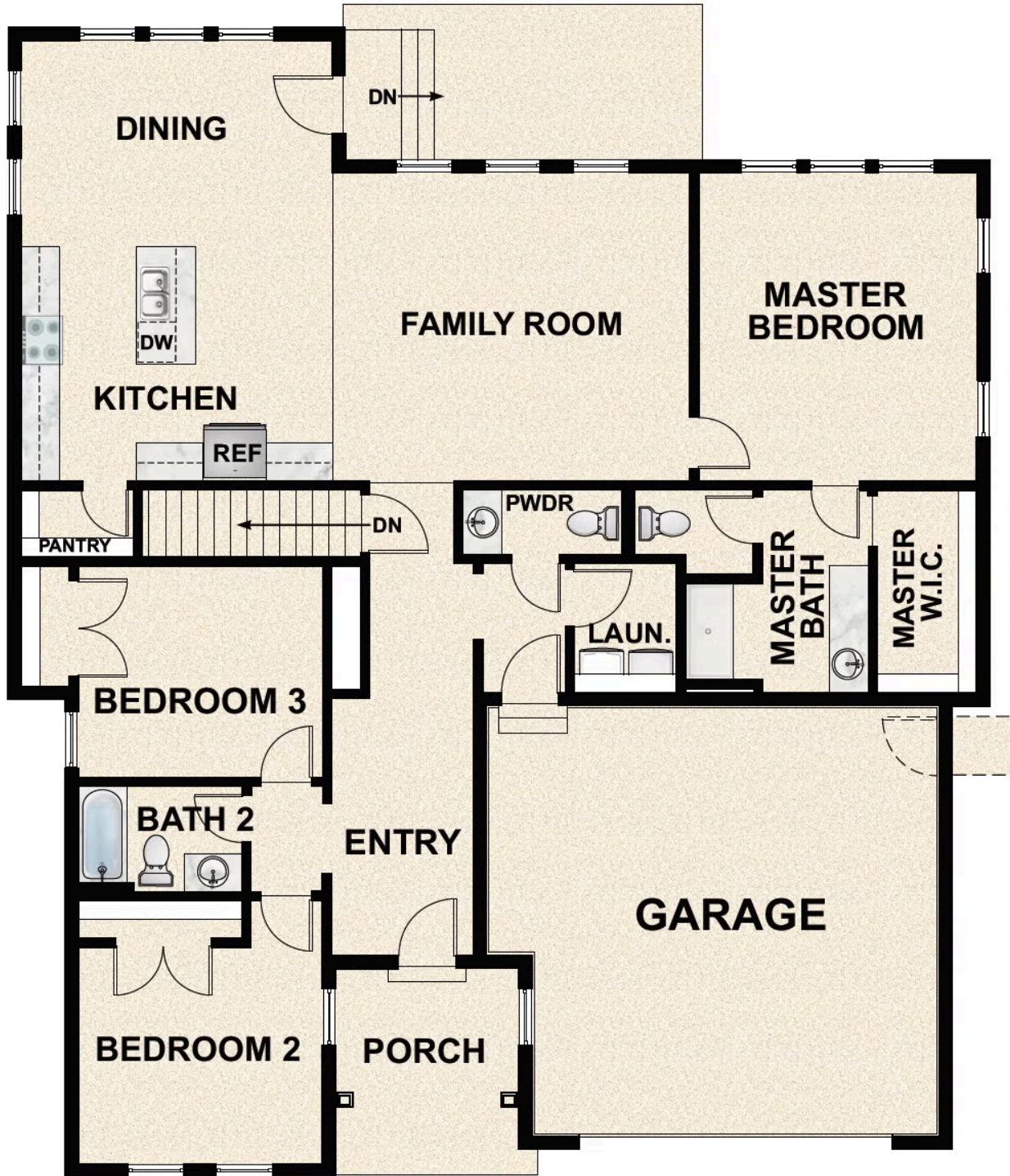
ABOUT THIS HOME

The Spruce is one of the rambler plans available in our Antelope Meadows community. With 3 bedrooms, 2.5 bathrooms, 1,929 finished sq ft, and 3,850 total sq ft, you'll have all the room you need! Off the entryway you have 2 bedrooms and a full bathroom, as well as a convenient mudroom, powder bathroom, and laundry room. Continuing into the home, you'll find a bright family room that flows into a gorgeous kitchen with our signature island, a walk-in pantry, and a spacious dining area. Off the family room you have a luxurious Owner's Suite with a spa-like Owner's bathroom, featuring a walk-in shower and large walk-in closet. Outside you have a 2 car garage with an optional 3rd car garage. You have the opportunity for even more space with an optional finished basement. This will give you a large recreation room, and an additional bedroom and bathroom.

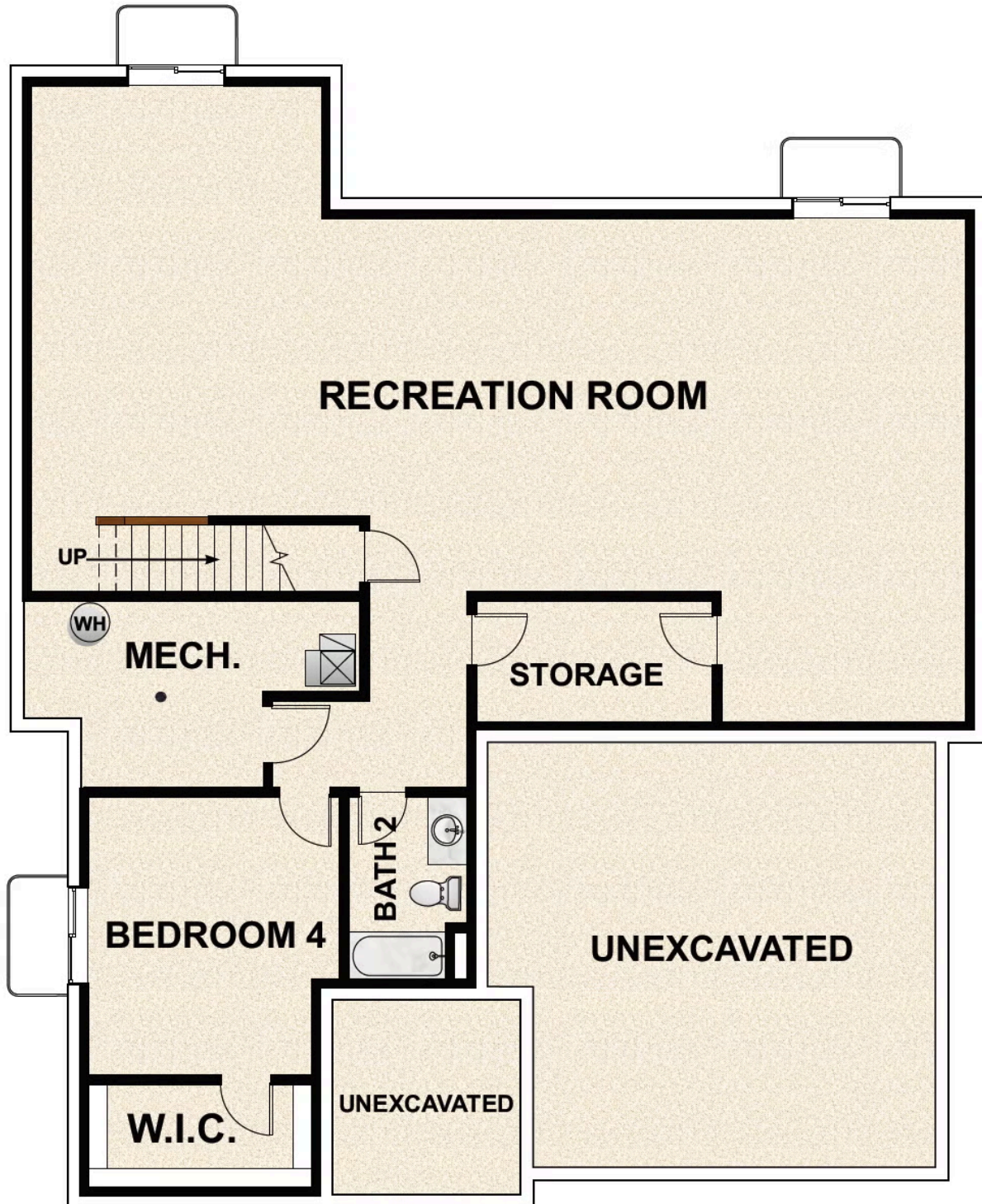
*Square Footage Based On Exterior Measurements; Actual Living Area May Vary.

This home features an optional Rental Suite. [Learn more about our Rental Suites here!](#)

FLOOR PLAN



FLOOR PLAN



FLOOR PLAN

