



## **ELWOOD TRANSITIONAL - ADU OPTION**

SINGLE FAMILY

Sq ft: 3,418

Beds: 3

Bath: 2.5

### **ABOUT THIS HOME**

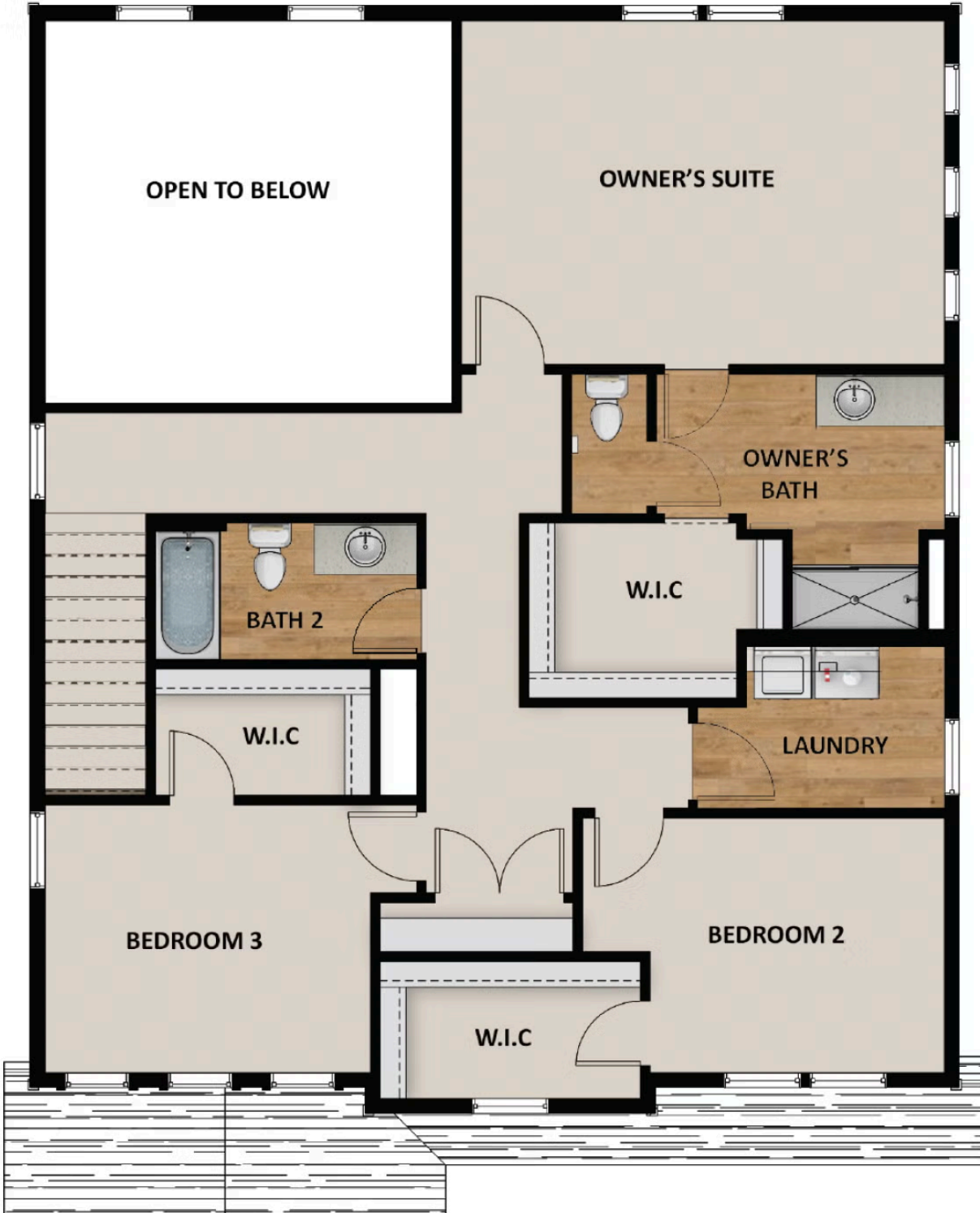
The two-story Elwood floor plan is one of our latest designs created specifically for our communities in Eagle Mountain, UT. The Elwood features a stylish and spacious design with 3 bedrooms, 2.5 bathrooms, 2,355 finished square feet, and 3,418 total square feet. You'll find a powder bath, closet, and stairs conveniently located along the entryway. As you continue on, you'll discover an open-concept for spacious living with a family room, dining room, and kitchen. The kitchen includes a large kitchen counter and updated appliances to cook meals you'll be proud of. Steps away from the kitchen is a roomy pantry and mudroom. Upstairs you'll find two bedrooms, a bathroom, a laundry room, and an owner's suite. All bedrooms include walk-in closets to give you needed storage space. In the owner's suite, you'll discover a spacious owner's bath with a large walk-in shower, vanity, and water closet. You have the option to finish the basement for a recreational room, bedroom, bathroom, closet, and storage space. Turn your recreation area into the room you'll love most—whether that be for a movie lounge, children's playroom, craft room, or workout area.

\*Square Footage Based On Exterior Measurements; Actual Living Area May Vary.

## FLOOR PLAN



## FLOOR PLAN



## FLOOR PLAN





Travis Schloderer  
TravisS@fieldstonehomes.com  
801-516-3865

## FLOOR PLAN