



ANNABELLA TRANSITIONAL - ADU OPTION

SINGLE FAMILY

Sq ft: 3,731

Beds: 3

Bath: 2.5

ABOUT THIS HOME

The Annabella is one of our rambler floor plans in our newest Antelope Meadows community. This spacious layout provides a grand open area on the main floor for the kitchen, dining and living areas.; which makes it great for entertaining! The large Owner's Suite is right across from two additional bedrooms, and bathrooms. The flex room is a perfect location for a gym, or work from home office. The basement area has a large recreation spot for your movie room, or game room! What says entertaining than inviting family and friends over for boardgames and a movie? Need two extra bedrooms? The basement has two additional rooms for you. This perfect floor plan is everything you need if you are looking for a rambler.

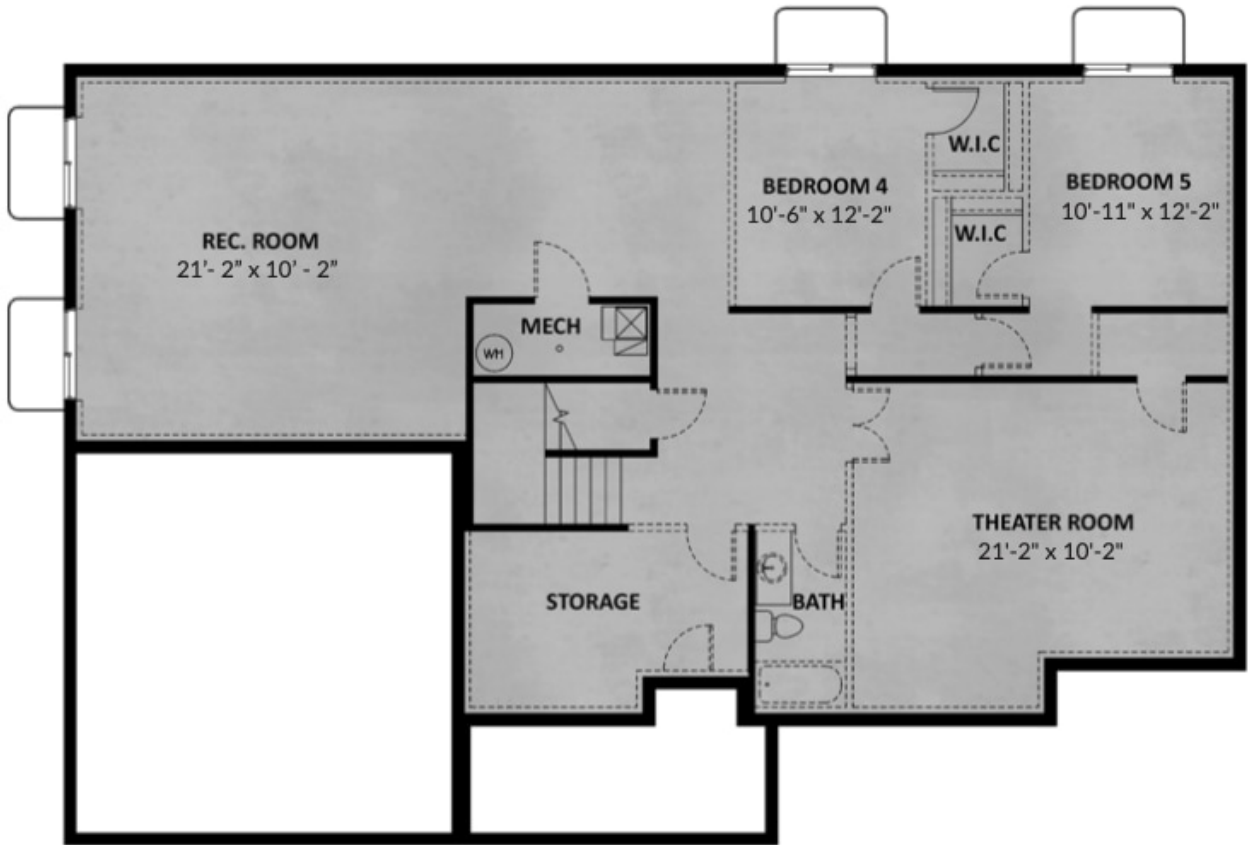
FLOOR PLAN



MAIN LEVEL

Pricing, features and availability are subject to change without notice. Fieldstone Homes makes reasonable efforts to provide accurate information, however, no warranties or representations are made as to its accuracy and Fieldstone Homes assumes no liability or responsibility for any errors in pricing or content. All pricing information, including promotions and incentives, must be verified by an authorized representative for the appropriate community and home. Photography, floor plans, elevations, renderings, virtual tours, maps, square footage and dimensions are approximate and for illustration purposes only, and will vary from the homes as built and are subject to change without notice. Homes in each neighborhood may be owned and sold by a separate limited liability company (LLC) or other corporate entity.

FLOOR PLAN



UNFINISHED BASEMENT

Pricing, features and availability are subject to change without notice. Fieldstone Homes makes reasonable efforts to provide accurate information, however, no warranties or representations are made as to its accuracy and Fieldstone Homes assumes no liability or responsibility for any errors in pricing or content. All pricing information, including promotions and incentives, must be verified by an authorized representative for the appropriate community and home. Photography, floor plans, elevations, renderings, virtual tours, maps, square footage and dimensions are approximate and for illustration purposes only, and will vary from the homes as built and are subject to change without notice. Homes in each neighborhood may be owned and sold by a separate limited liability company (LLC) or other corporate entity.

FLOOR PLAN



Finished Basement Floor