



SWEETWATER TRANSITIONAL - ADU OPTION

SINGLE FAMILY

Sq ft: 2,747

Beds: 3

Bath: 2.5

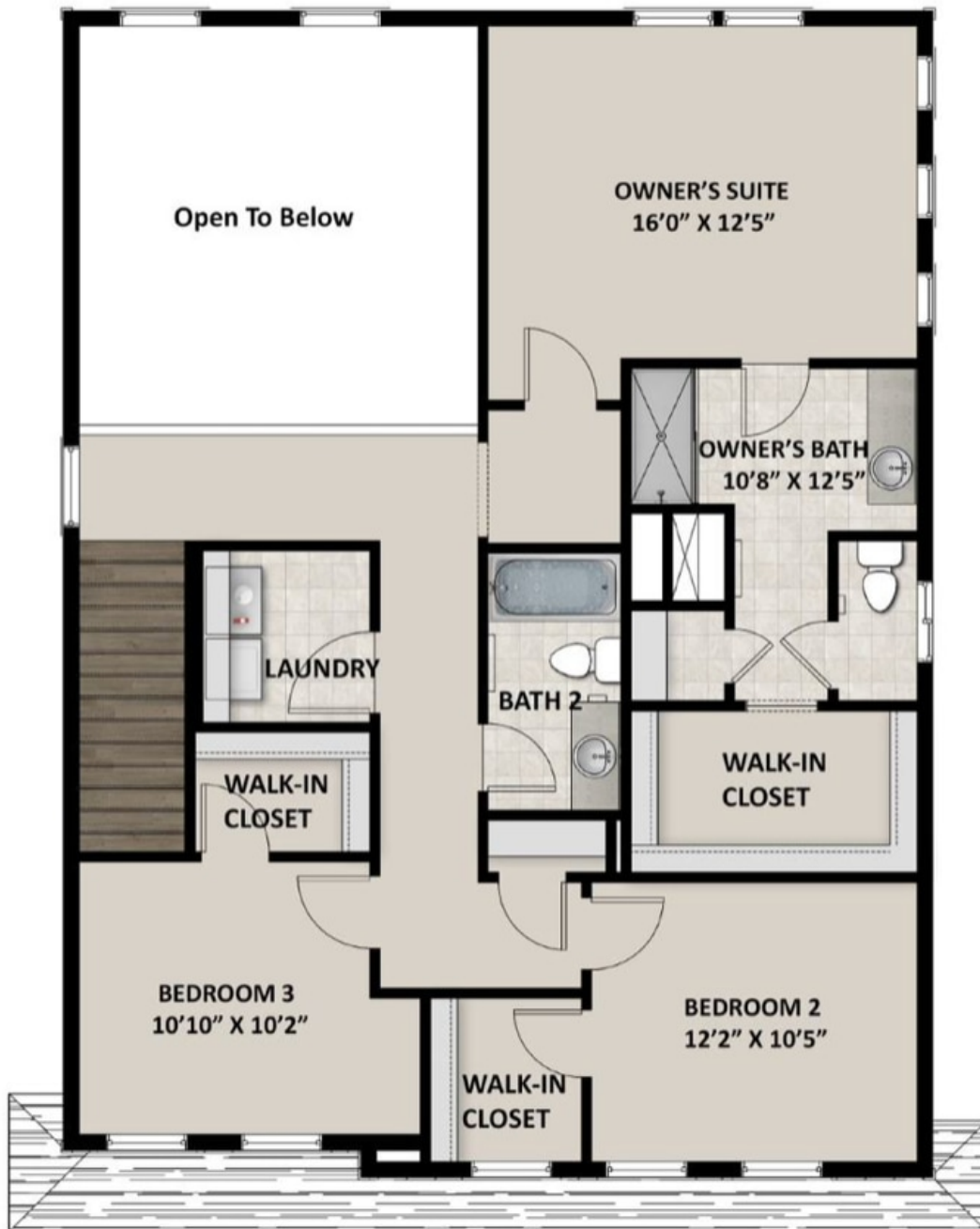
ABOUT THIS HOME

Our Sweetwater floor plan offers up modern features and layout for you and your family to enjoy! Walk inside to discover a main living space with 9' ceilings and an open-to-below great room. In the kitchen, you'll find staggered or 42" upper kitchen cabinets, and a large island for a stylish and functional kitchen. The owner's bath includes a spacious fiberglass walk-in shower for a spa-like bathroom. The Sweetwater includes 3 bedrooms, 2.5 bathrooms, and 2,747 total square feet.

FLOOR PLAN



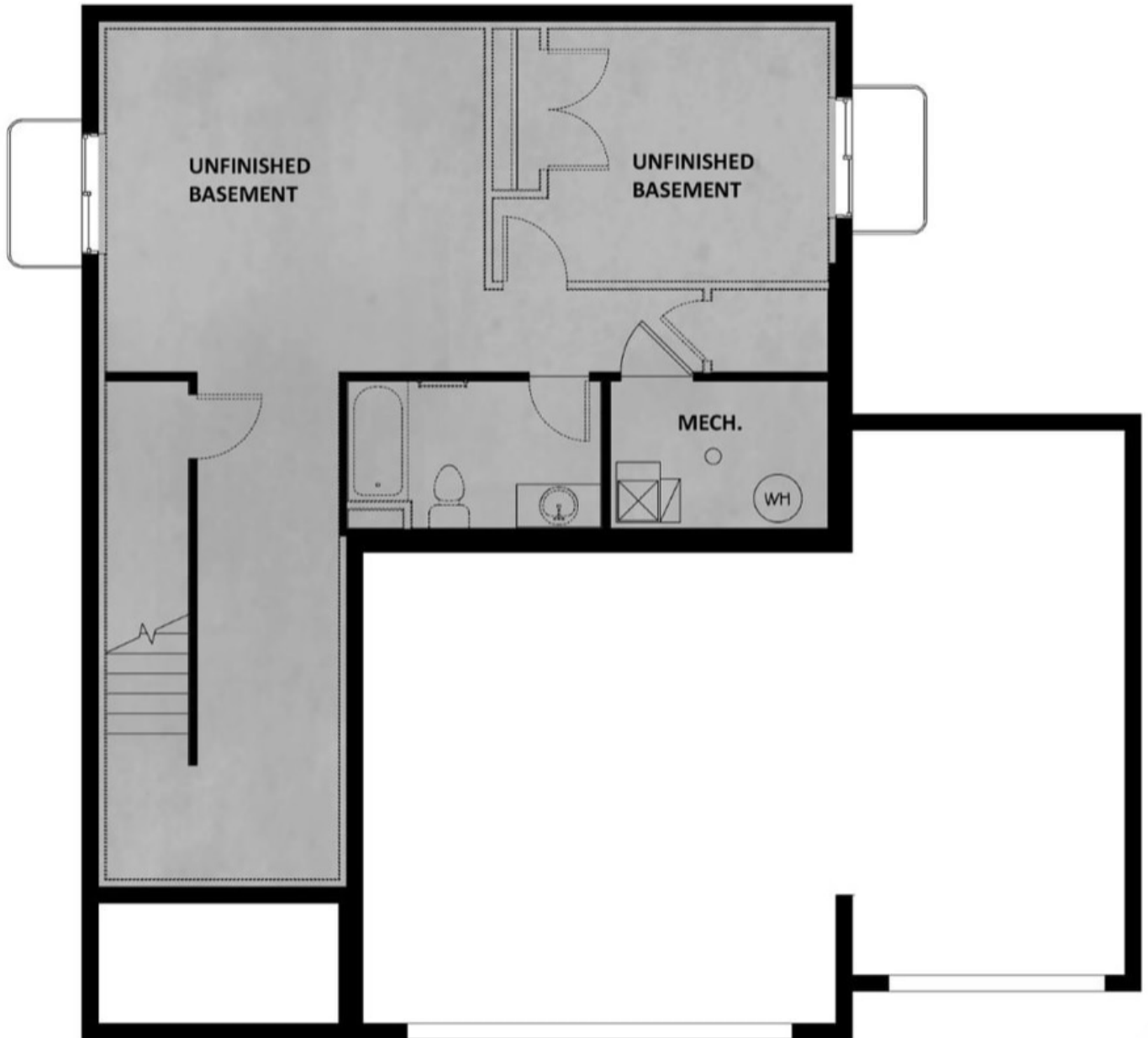
FLOOR PLAN



FLOOR PLAN



FLOOR PLAN



FLOOR PLAN

