



TRIO

SINGLE FAMILY

Sq ft: 3,120

Beds: 3

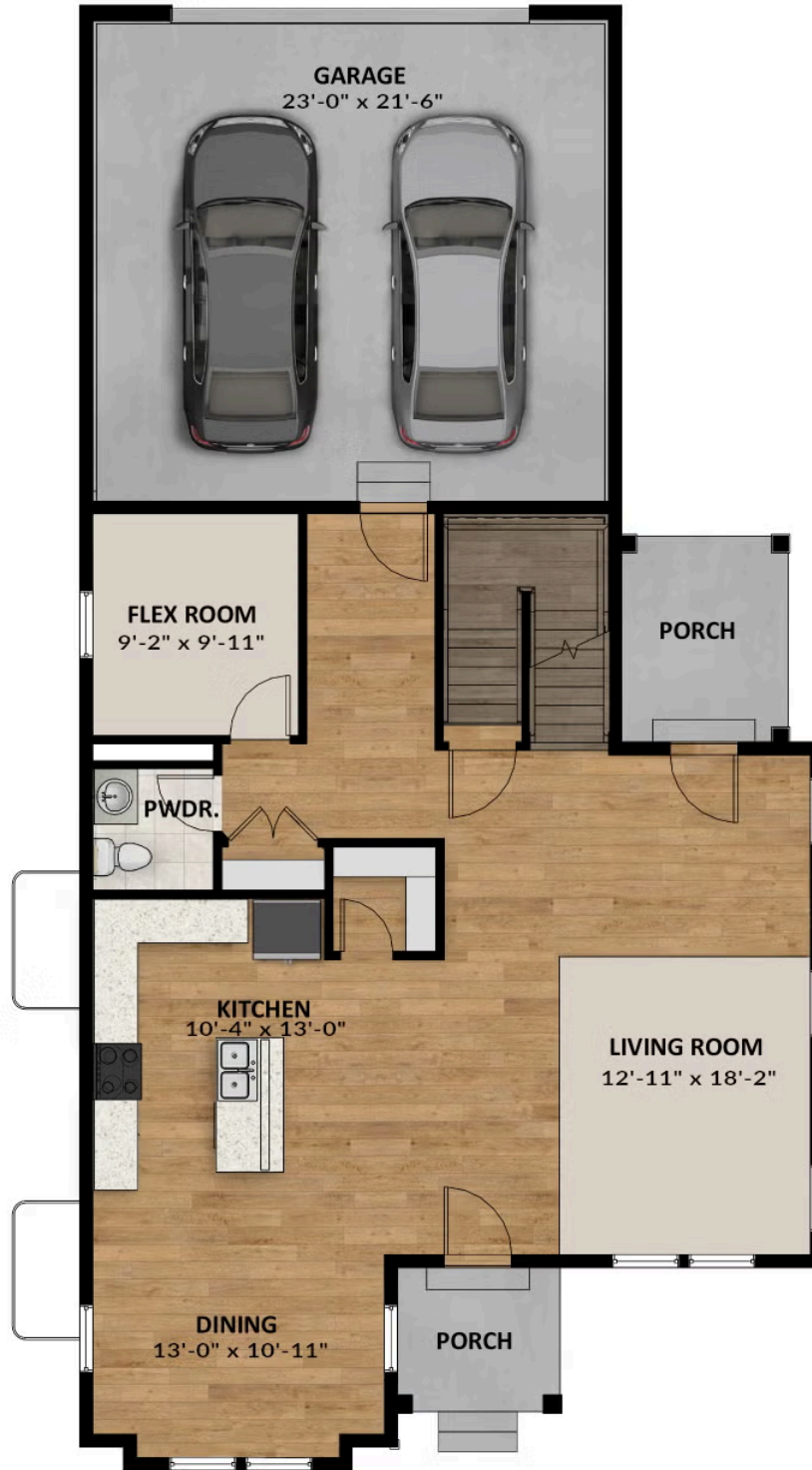
Bath: 2.5

Garage: 2

ABOUT THIS HOME

Enter the Trio floorplan and your breath will be taken away by the wide open kitchen, living room, and dining area. The openness truly allows for a terrific living flow of space with thought out designs. Towards the back of the home, you'll find a flex room, a great space for a home office, or library, and a 2 car garage. Upstairs a giant loft space for a huge sectional and flat screen tv is located right outside the enormous owner's suite, and owner's bath. You can find two other bedrooms with walk-in closets, and a laundry room. If you decide to finish the large basement, you will gain two additional bedrooms, and extra bathroom and a huge recreation room.

FLOOR PLAN



FLOOR PLAN



FLOOR PLAN

