



STELLA

SINGLE FAMILY

CALL FOR PRICE

Sq ft: 3,506

Beds: 3

Bath: 2.5

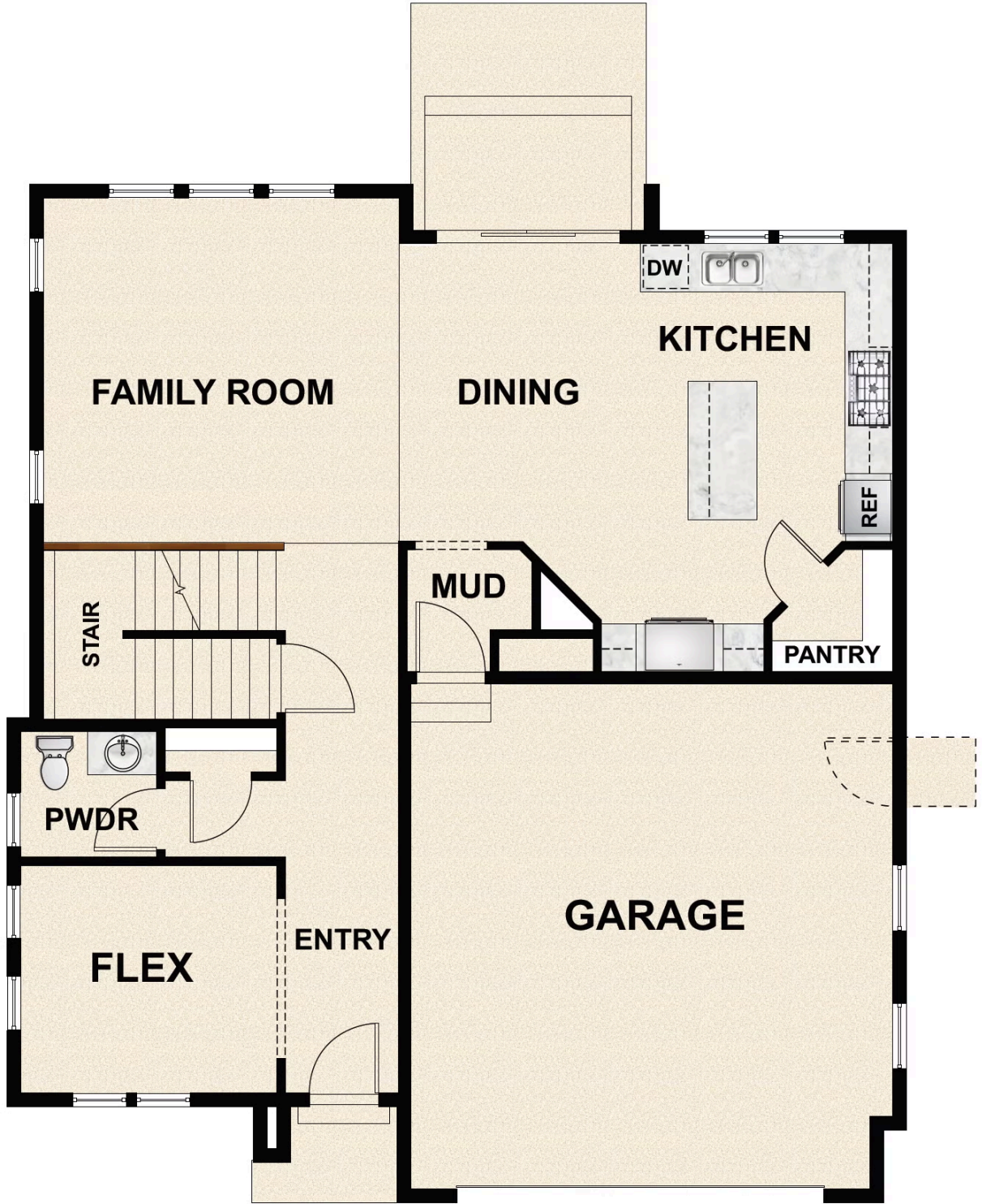
Garage: 2

ABOUT THIS HOME

The Stella floor plan features 3-5 bedrooms, 2.5-3.5 bathrooms, 2,400 finished square feet and 3,506 total square feet. Enjoy the openness of this amazing floor plan with an abundance of natural light. The flex room, close to the entrance of the home, is ideal as an office, gym or a formal living space. Continuing in you have a convenient powder bath located off the entry hallway. Enter the two-story great room with unstoppable light that floods from floor to ceiling windows, and flows into a spacious dining room and state-of-the-art kitchen. This includes a massive island with seating for 4 and is equipped with a gourmet kitchen and plenty of countertop space. Off the dining room, you'll find a practical mudroom that leads to your garage. Upstairs you'll find a loft space with a balcony you can take advantage of the views with. The Owner's Suite is spacious and flooded with light from all of the windows. You will also find a large walk-in closet with plenty of space. The Owner's Bath is spa-like with a walk-in shower, large vanity, natural light, and a water closet. You will also find two more bedrooms, a bathroom, and a laundry room on this upper floor. In the basement, you have the option for even more room with a recreation room and additional bedroom and bathroom.

*Square Footage Based On Exterior Measurements; Actual Living Area May Vary.

FLOOR PLAN



FLOOR PLAN



FLOOR PLAN

