



STEIN

SINGLE FAMILY

CALL FOR PRICE

Sq ft: 3,175

Beds: 3

Bath: 2.5

Garage: 2

ABOUT THIS HOME

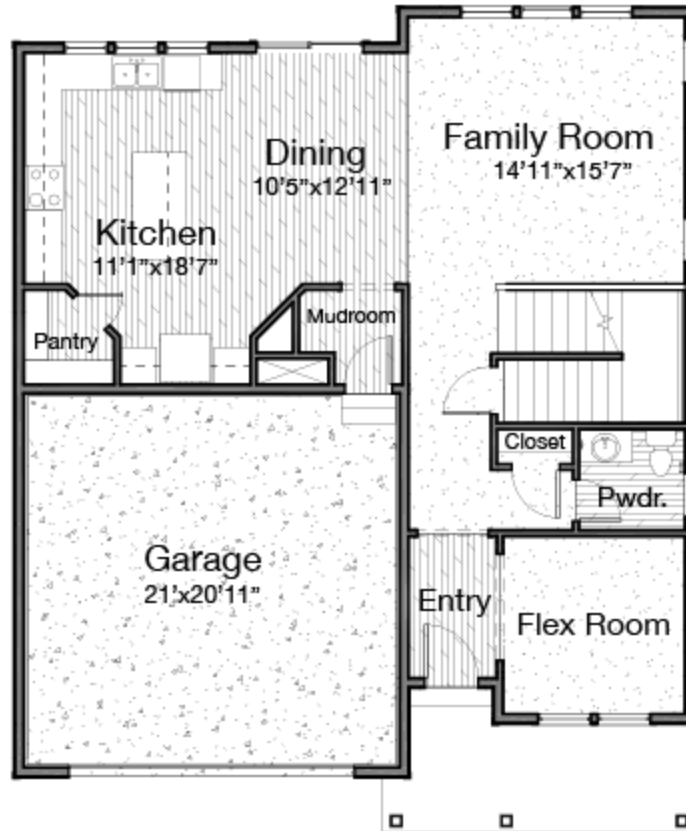
Let the Stein floor plan welcome you with its open-concept layout and spacious design. The Stein includes 3 bedrooms, 2.5 bathrooms, 2,196 finished square feet, and 3,175 total square feet.

Walk inside to find a flex room off the entry to use as a home office, formal dining space, or whatever suits you best. A bright, two-story family room leads into the dining and kitchen space. This location is ideal for socializing, eating, and lounging. A large pantry and kitchen island makes it easy for meal prepping and cooking dinner for the family.

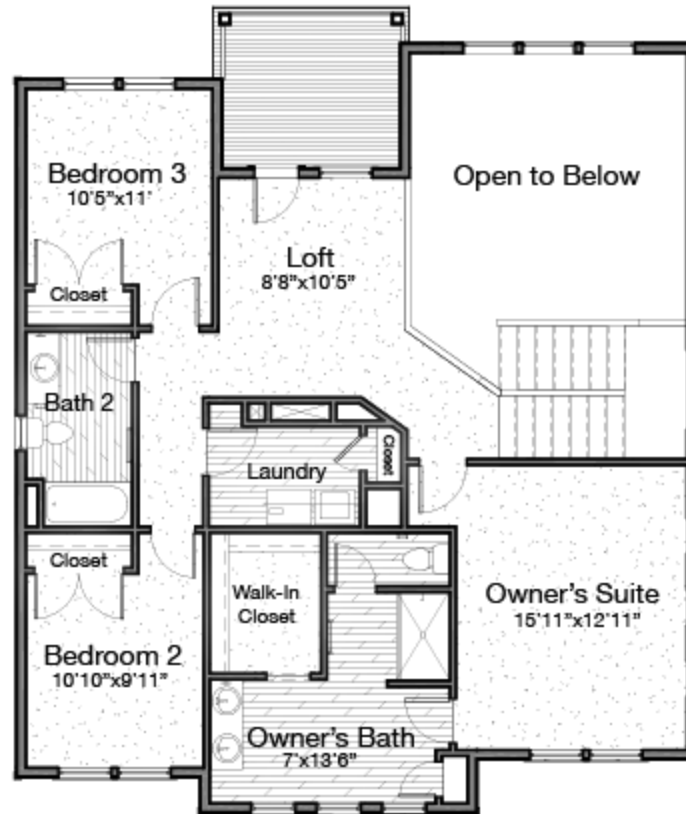
Upstairs you'll discover a gorgeous view of your open to below family room from your loft. Turn your flexible loft into whatever space fits your lifestyle most. A spacious owner's suite provides the space you've always dreamed of with its many windows, owner's bath, walk-in closet, water closet, walk-in shower, and large vanity.

For more living space, you have the option to finish your basement with two bedrooms, a bathroom, storage, and a roomy recreation area. Turn your recreation area into a room you've always wanted—whether a children's playroom, movie lounge, or more.

FLOOR PLAN



FLOOR PLAN



FLOOR PLAN

