



## SAGE

SINGLE FAMILY

**CALL FOR PRICE**

Sq ft: 4,680

Beds: 4

Bath: 2.5

Garage: 2

## ABOUT THIS HOME

Enjoy coming home to the Sage floor plan with 4 bedrooms, 2.5 bathrooms, 2,876 finished sq ft, and 4,680 total sq ft. Transform the flex room off the entryway into a home office or play room. Continuing inside, you'll find a convenient mudroom, powder bath, and laundry room. Past this is a grand, two-story great room with floor-to-ceiling windows. This flows into a beautiful kitchen with our signature kitchen island and a walk-in pantry, as well as a bright and spacious dining area. Off the living room you have a luxurious owner's suite with a spa-like owner's bathroom that features a gorgeous walk-in shower and large walk-in closet. Upstairs you have a loft space, perfect for a game room or lounge space. You also have 3 more additional bedrooms, and a full bathroom. Outside you have a 3 car garage with an optional 4 car garage. You also have the opportunity for more space in an optional finished basement with a large recreation room, one more bedroom, and a full bathroom.

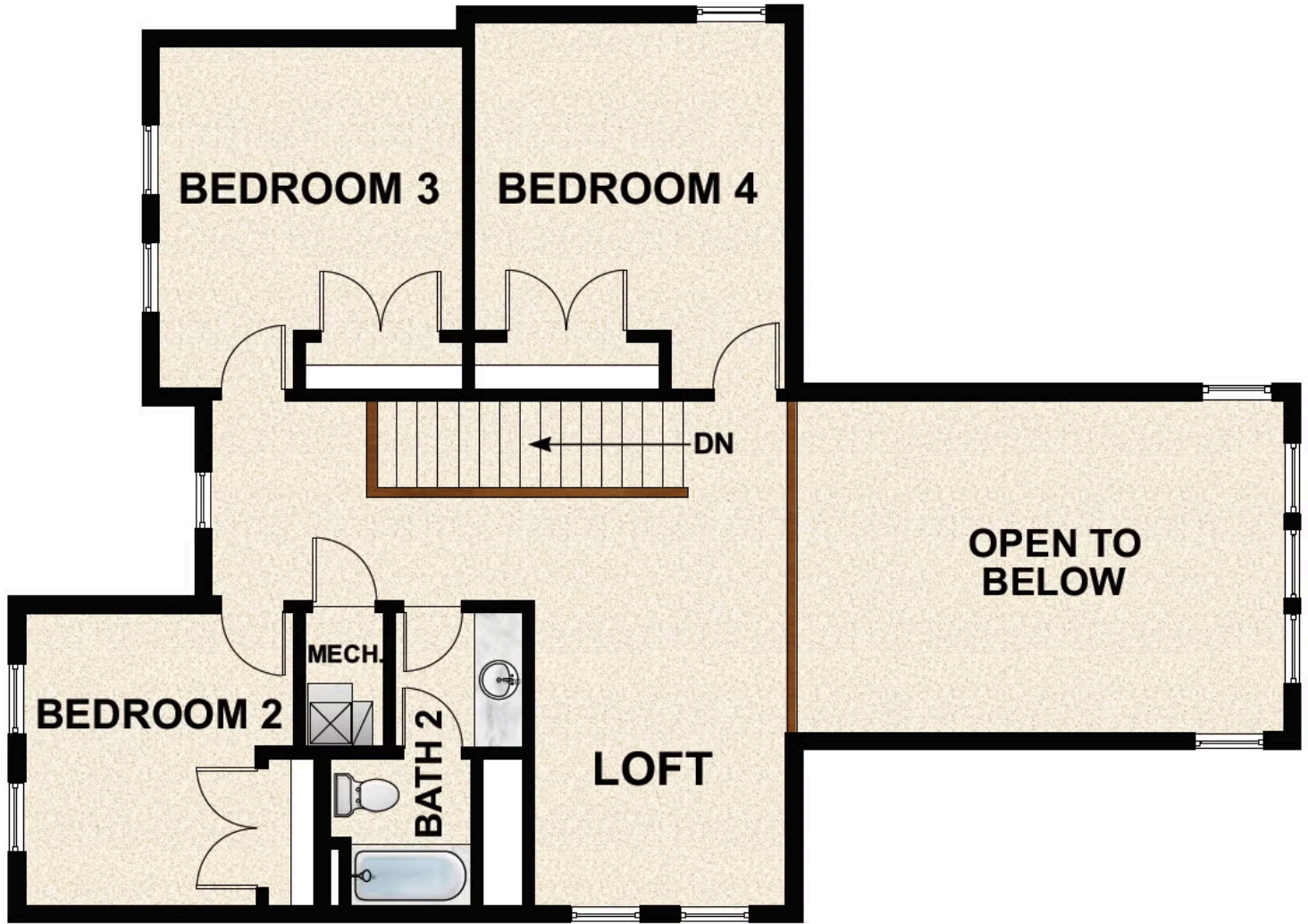
\*Square Footage Based On Exterior Measurements; Actual Living Area May Vary.

This home features an optional Rental Suite. [Learn more about our Rental Suites here!](#)

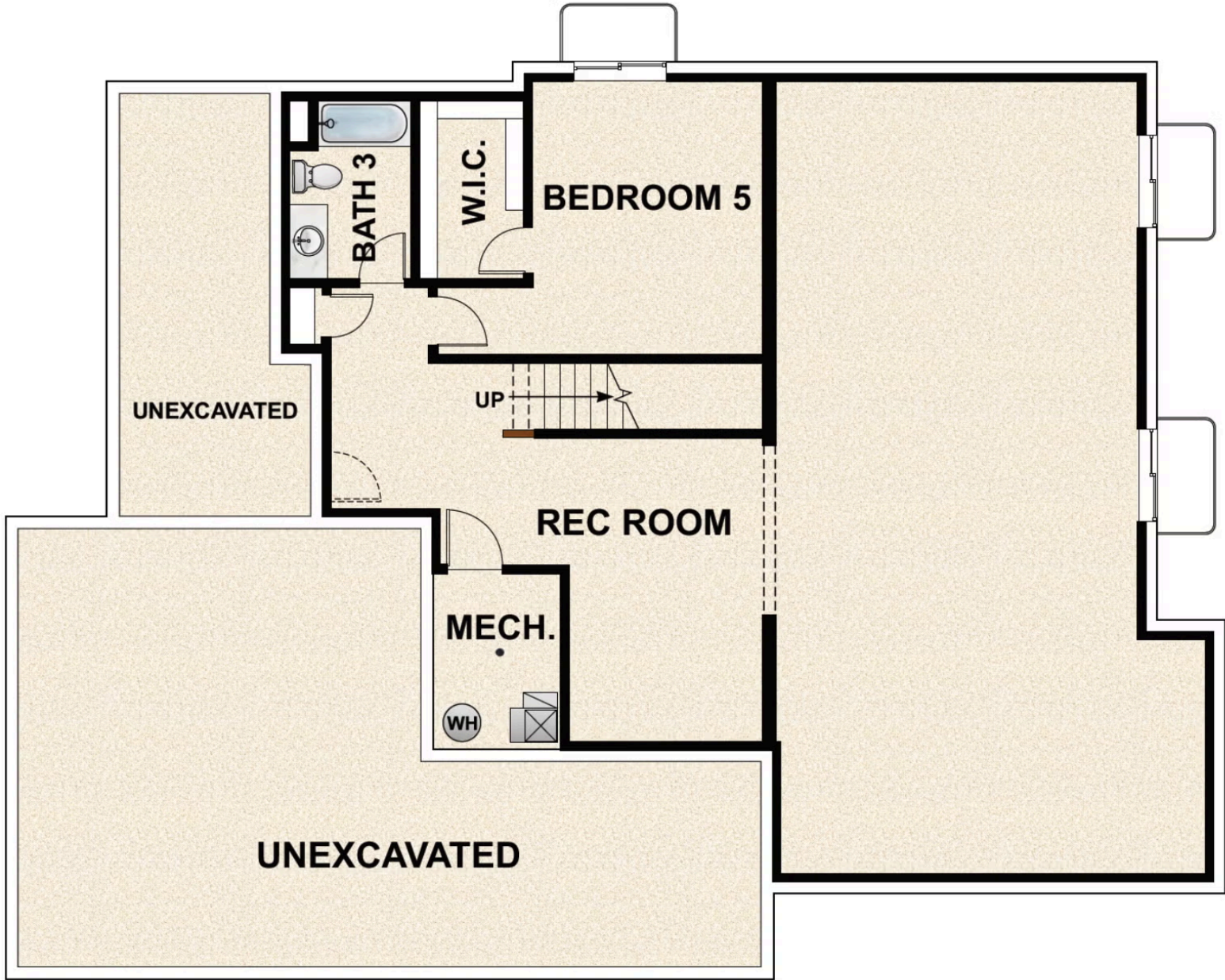
## FLOOR PLAN



**FLOOR PLAN**



**FLOOR PLAN**



## FLOOR PLAN