



ROSEWOOD

CALL FOR PRICE

Sq ft: 1,611

Beds: 3

Bath: 2.5

Garage: 2

ABOUT THIS HOME

The Rosewood is one of the amazing rambler plans available in our new Rosalia Ridge community. With 3 bedrooms, 2.5 bathrooms, 1,611 total sq ft, you'll have all the room you need! Off the entryway you have 2 bedrooms and a full bathroom convenient powder room for guests. Continuing into the home, you'll find a bright living room that flows into a gorgeous kitchen with our signature island, a walk-in pantry, and a spacious dining area. Off the living room you have a luxurious Owner's Suite with a spa-like Owner's bathroom, featuring a walk-in shower and large walk-in closet. Outside you have a 2 car garage with an optional 3rd car garage.

Approximate Square Footage Based On Exterior Measurements; Actual Living Area May Vary. Renderings Are Concept Only

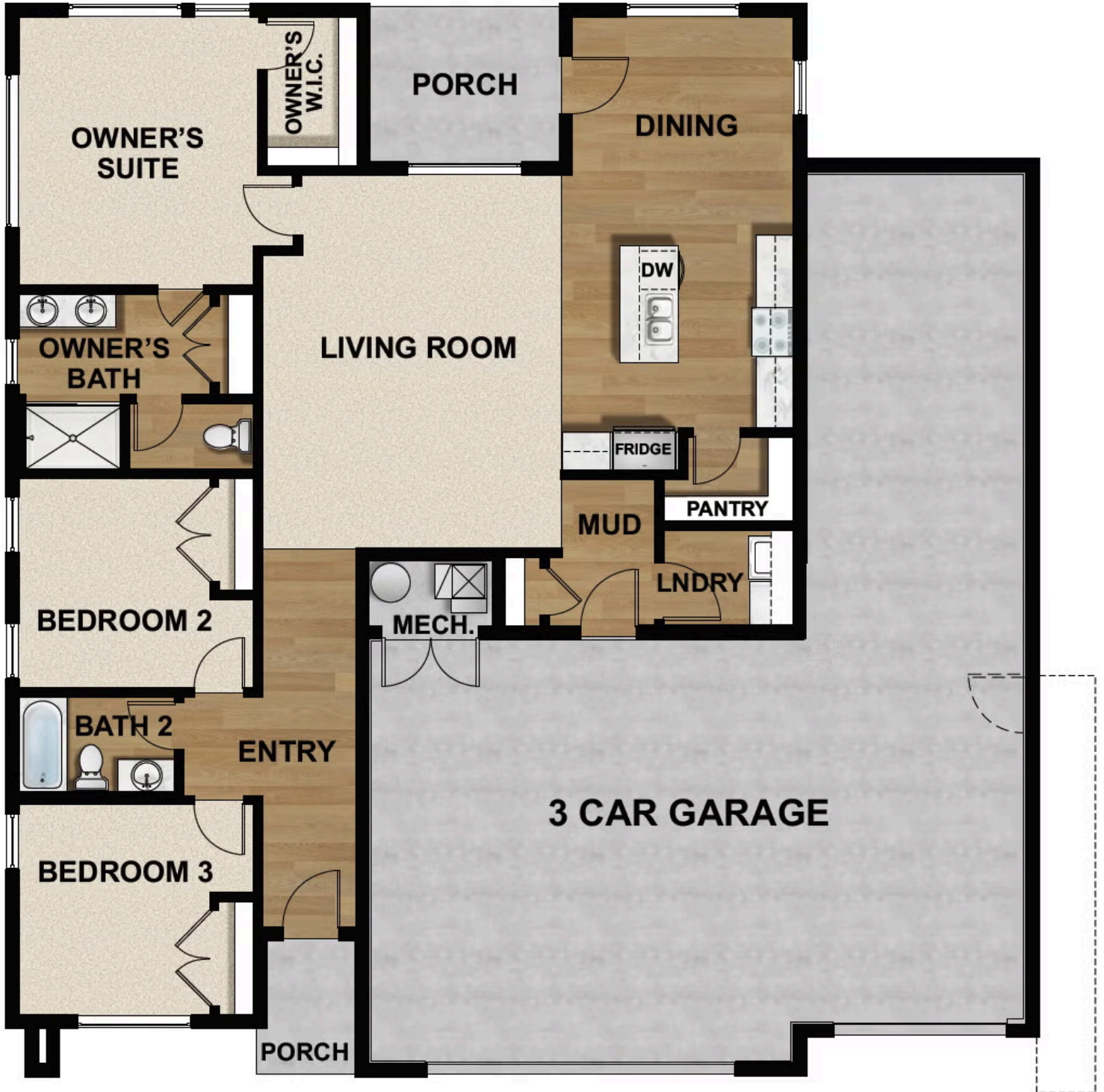
FLOOR PLAN



FLOOR PLAN



FLOOR PLAN



FLOOR PLAN

FLOOR PLAN



FLOOR PLAN

Pricing, features and availability are subject to change without notice. Fieldstone Homes makes reasonable efforts to provide accurate information, however, no warranties or representations are made as to its accuracy and Fieldstone Homes assumes no liability or responsibility for any errors in pricing or content. All pricing information, including promotions and incentives, must be verified by an authorized representative for the appropriate community and home. Photography, floor plans, elevations, renderings, virtual tours, maps, square footage and dimensions are approximate and for illustration purposes only, and will vary from the homes as built and are subject to change without notice. Homes in each neighborhood may be owned and sold by a separate limited liability company (LLC) or other corporate entity.

FLOOR PLAN