



MASON

SINGLE FAMILY

CALL FOR PRICE

Sq ft: 1,677

Beds: 3

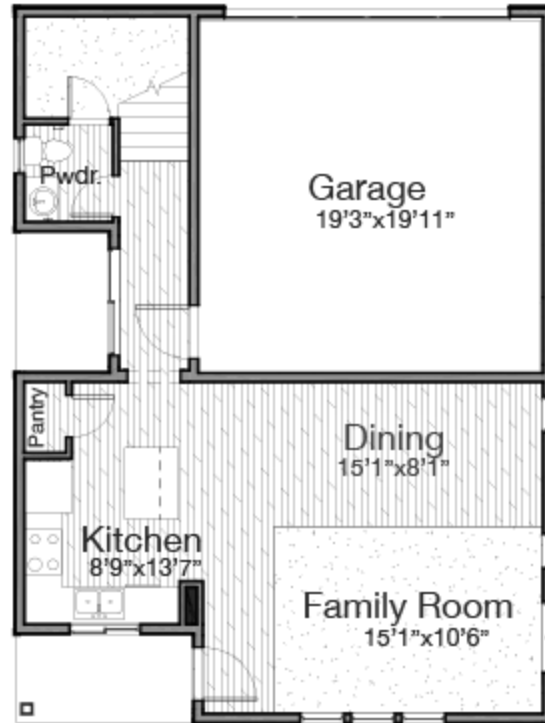
Bath: 2.5

Garage: 2

ABOUT THIS HOME

Bringing charm and comfort, The Mason floor plan in our new Arrowhead community has it all. Entering the main floor with 9' ceilings, you'll discover lots of light and open space on the main level with windows for a welcoming nature. The kitchen features a 4'x3' kitchen island with breakfast bar, perfect for entertaining. The owner's bathroom includes a 5' walk-in shower and a 60" vanity. A bonus loft off the stairs creates more space to create an area of your choice, whether that be a study nook or lounge space. The Mason includes 3 bedrooms, 2.5 bathrooms, and 1,677 finished square feet. These rear-loaded single family homes also feature a crawl space. Arrowhead amenities will include walking trails, wetland areas for bike rides, outdoor activities, and even picnics. The Mason amenities in the community will include Neighborhood parks, Walking, running, and hiking trails, Wetland areas for bike rides, outdoor activities, and picnics.

FLOOR PLAN



FLOOR PLAN

