



## LILY

SINGLE FAMILY

**CALL FOR PRICE**

Sq ft: 3,560

Beds: 3

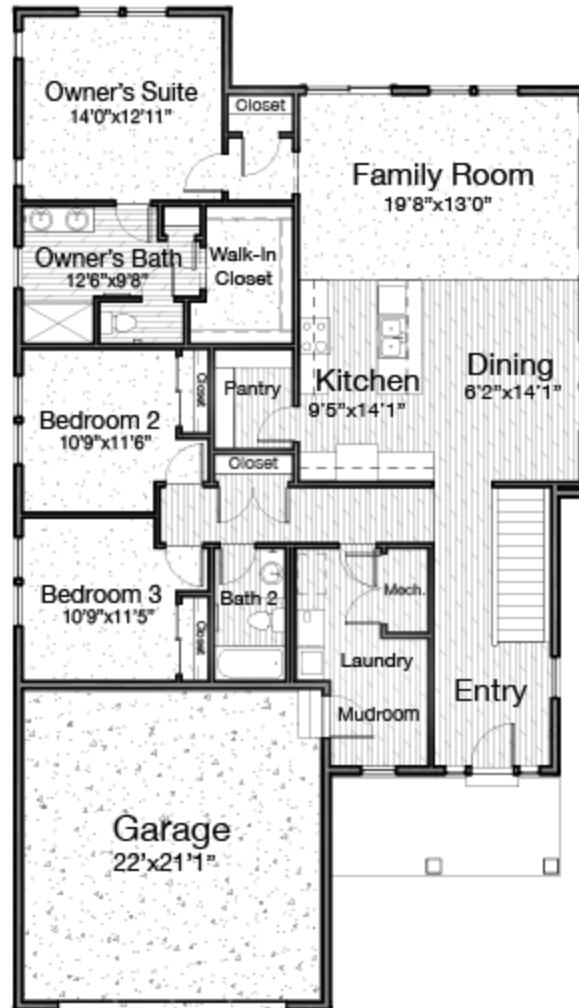
Bath: 2.0

Garage: 2

## ABOUT THIS HOME

Let the Lily floor plan inspire you to live the lifestyle you've always dreamed of with its updated, open concept and functional design. The Lily includes 3 bedrooms, 2 bathrooms, 1,830 finished square feet, and a total of 3,560 square feet. This rambler impresses with plenty of space for storage and your essentials, with a walk-in pantry within the kitchen, a spacious owner's suite, and an owner's walk-in closet. Enjoy the natural lighting that comes through from the many windows throughout the layout, making it the ideal home you've always wanted to come back to. Featuring an optional finished basement. The community of Silver Creek will also feature amenities from a bike park, pickleball courts, community garden, splash pad, and so much more!

## FLOOR PLAN



## FLOOR PLAN

