



HAMPTON

SINGLE FAMILY

CALL FOR PRICE

Sq ft: 1,832

Beds: 4

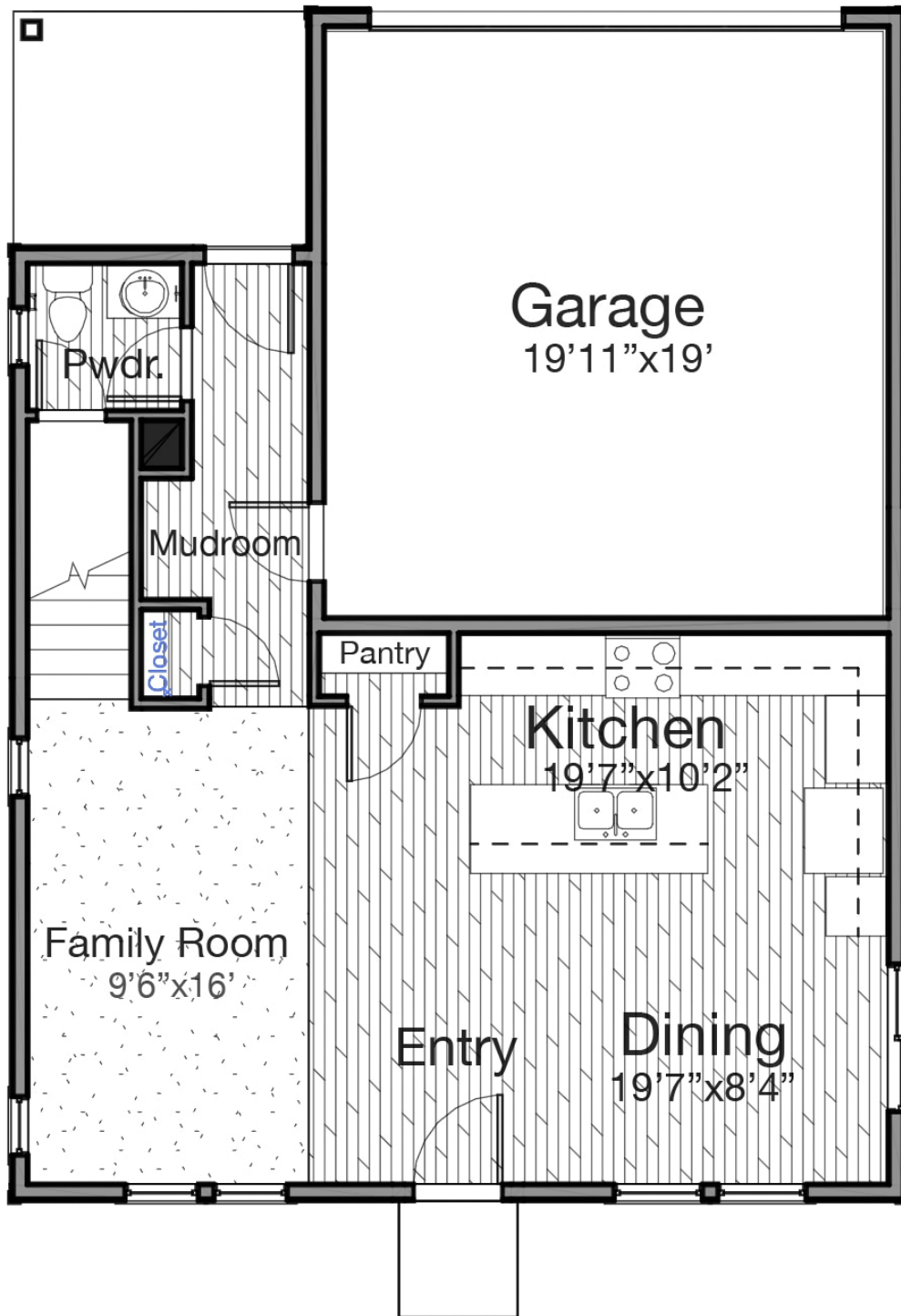
Bath: 2.5

Garage: 2

ABOUT THIS HOME

You're going to fall in the love with The Hampton -- a 4 bedroom, 2.5 bathroom floor plan with an open-concept and plenty of natural light! With 1,832 finished square feet, you have all the room you need to think bold with your design and create your dream home. On the main floor you'll find open space, and plenty of windows to make you feel at home as soon as you open the door. In the kitchen you have a gorgeous kitchen island with breakfast bar, LED can lighting, and Whirlpool appliances to create the perfect space for entertaining. The loft upstairs gives you more space to create an area of your choice, whether that's a study nook, playroom, or lounge space. The owner's suite includes a spacious walk-in-closet, low-maintenance high-definition laminate countertops, and a gorgeous walk-in shower. Arrowhead amenities will include walking trails, wetland areas for bike rides, outdoor activities, and even picnics.

FLOOR PLAN



FLOOR PLAN

