



FORGE

SINGLE FAMILY

Sq ft: 3,283

Beds: 3

Bath: 2.5

Garage: 2

ABOUT THIS HOME

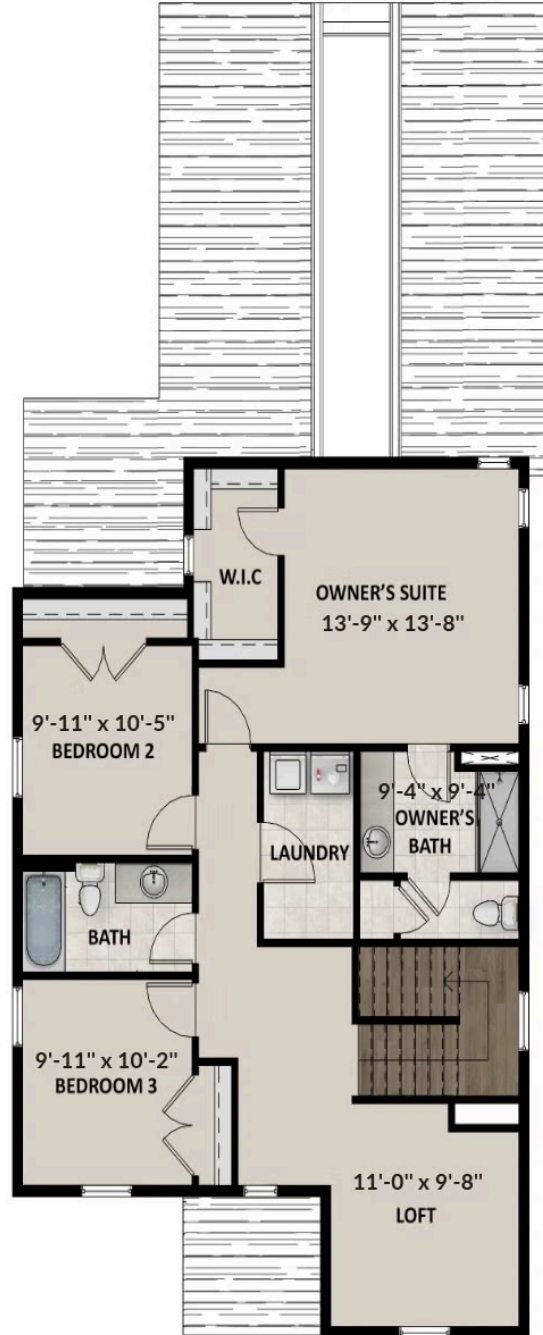
Open, airy, and filled with light, the Forge plan is a living space where you find comfort and warmth around every corner. A convenient flex room and dining room right off the entryway leads into a family room that's large enough for get-togethers. It's also cozy enough for intimate family moments and a little bit of privacy. Next to the family room you'll find a gorgeous, spacious kitchen complete with an island, powder room and mudroom for your convenience. Head upstairs to your owner's suite where leisure and relaxation is your everyday reality. Complete with a massive walk-in closet and luxurious bathroom with a walk-in shower, you'll always look forward to waking up in the morning and unwinding at night. The second floor also provides 2 extra bedrooms, a bathroom, a convenient laundry area, and a cozy loft that can easily fit a full-size sofa and flat-screen television. If you want even more space, you have the option to beautifully finish a basement that will include another full bedroom, bathroom, storage space, and large open area to personalize. Whether you've always wanted a comfortable movie lounge, a children's playroom, or a home office—your preferences will come to life. This floor plan comes with 3 bedrooms, 2.5 bathrooms, 2,226 finished square feet, and 3,283 square feet of gorgeous space to call your own.

FLOOR PLAN



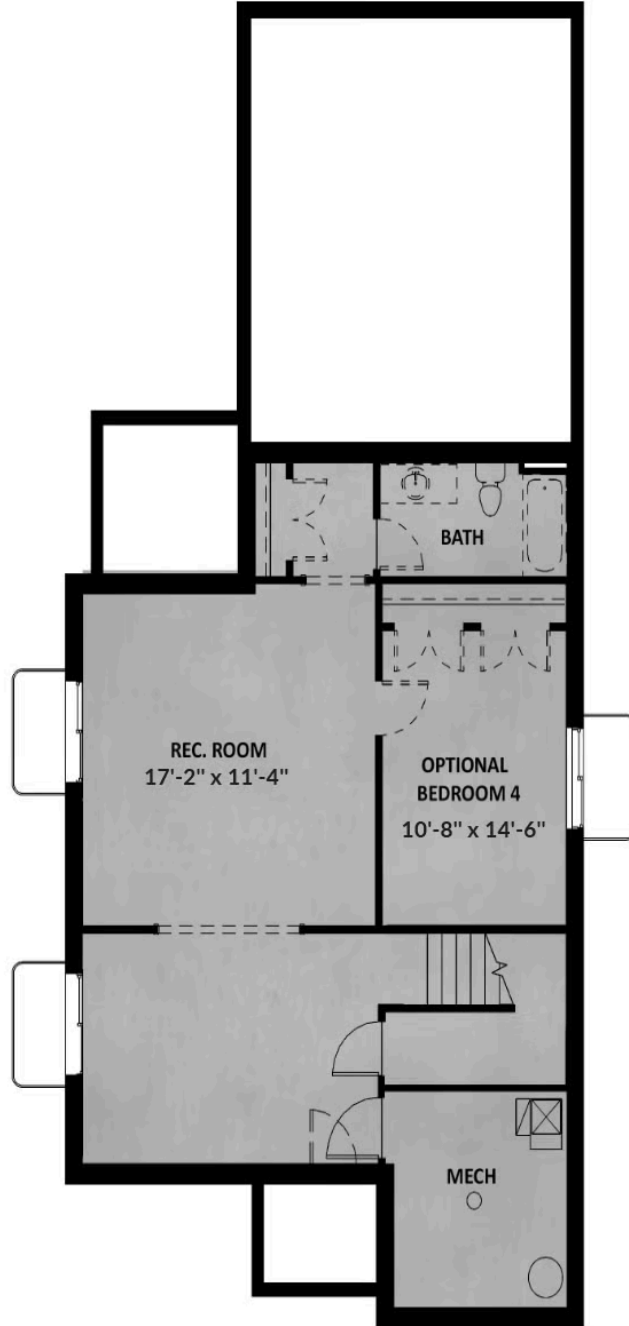
MAIN LEVEL

FLOOR PLAN



UPPER LEVEL

FLOOR PLAN



UNFINISHED BASEMENT