



CRESCENT

SINGLE FAMILY

CALL FOR PRICE

Sq ft: 3,213

Beds: 3

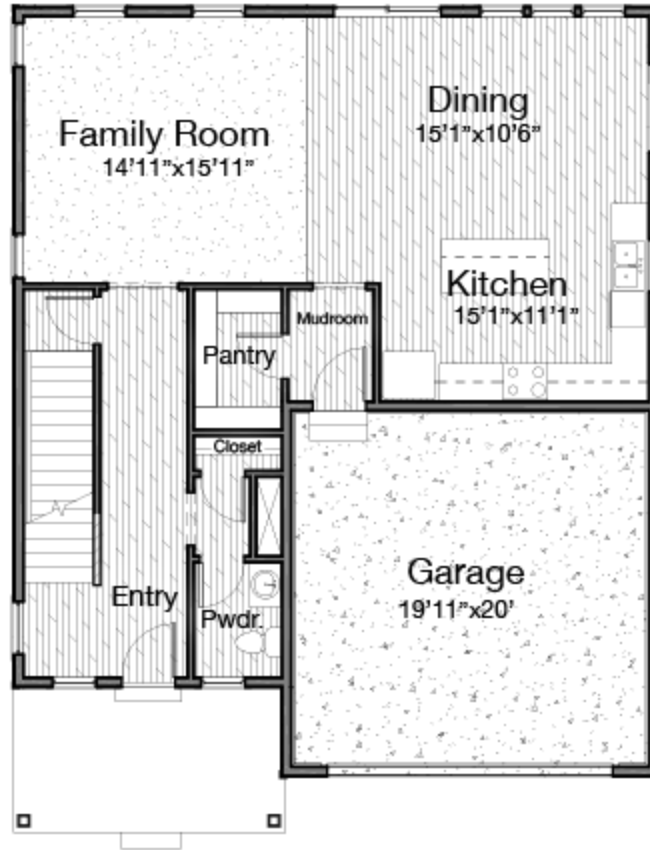
Bath: 2.5

Garage: 2

ABOUT THIS HOME

The Crescent floor plan creates the ideal living space for you with its 3 bedrooms, 2.5 bathrooms, 2,247 finished square feet, and 3,213 total square feet. The bright entryway first leads to a convenient powder room and closet perfect for coats. It will then take you to the airy family room with its open-to-below design. This spacious area is perfect for lounging, entertaining, or spending time with family. The kitchen showcases granite countertops, connects to the mudroom, and has a hidden walk-in pantry to keep cooking items out-of-sight when they're not in use. Upstairs, the open railing provides a gorgeous view of your family room downstairs and extra light all around. Also on the second floor are the owner's suite, two other bedrooms, a bathroom, and a laundry room. The luxurious owner's suite bathroom includes a spacious vanity, walk-in closet, shower, and water closet. Within each bedroom is a walk-in closet so you get the space you want. You have the option to finish the basement for a large recreation room, an extra bedroom, and a bathroom. Transform the recreation room to fit your lifestyle as a playroom, movie lounge, or workout area, or more.

FLOOR PLAN



FLOOR PLAN



FLOOR PLAN

