



COPPERVIEW

SINGLE FAMILY

CALL FOR PRICE

Sq ft: 4,204

Beds: 3

Bath: 2.5

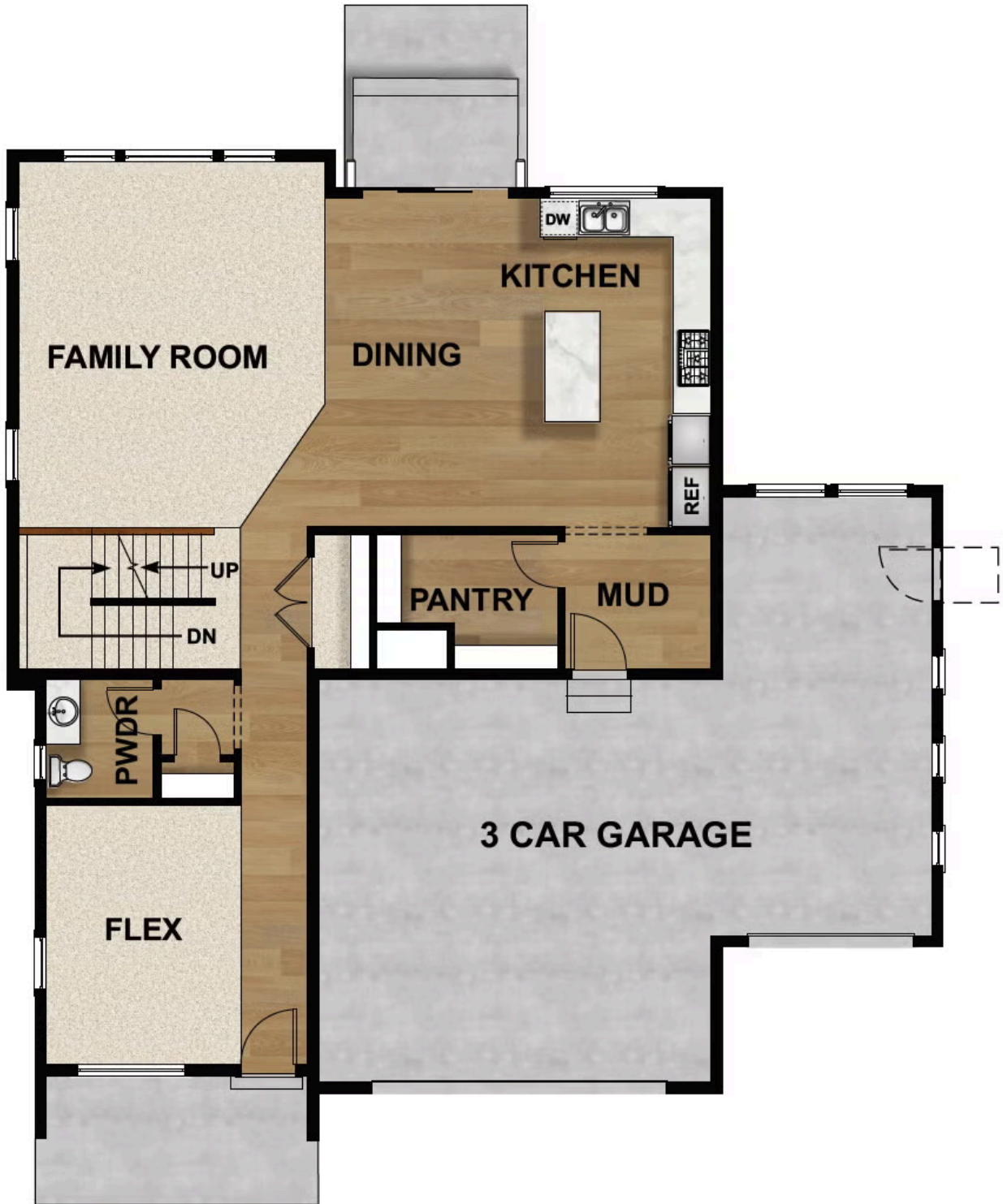
Garage: 2

ABOUT THIS HOME

Enjoy the openness of this amazing floor plan with an abundance of natural light. The flex room is close to the entrance and is ideal as an office, gym or a formal gathering space. Enter the two-story great room with unstoppable light that floods from an open floor plan. The two-story great room is ideal to gather with the living spaces tied together for a high-end living experience. The state-of-the-art kitchen includes a massive island with seating for four and is equipped with plenty of cooktop and countertop space. The Crossings community also features amenities from a large community swimming pool & clubhouse, fishing ponds, pickle-ball courts, basketball courts, tennis courts, walking trails and so much more!

Approximate Square Footage Based On Exterior Measurements; Actual Living Area May Vary. Renderings Are Concept Only

FLOOR PLAN



FLOOR PLAN



FLOOR PLAN

